

ECHTHAAR PERÜCKEN · HUMAN HAIR WIGS · PERRUQUES CHEVEUX NATURELS · PELUCAS DE CABELLO NATURAL · PARRUCHE CAPELLI NATURALI

Belle Madame[®]

Natural Hair Line



by DENING HAIR 

Human Hair
Cheveux Naturels
Echthaar
Cabello Natural
Capelli Naturali

Thank  you

FOR 60 YEARS

VOLLENDETE HAARE FÜR HÖCHSTE ANSPRÜCHE

PERFECT HAIR TO MEET THE HIGHEST DEMANDS

DES CHEVEUX PARFAITS A LA HAUTEUR DES EXIGENCES LES PLUS STRICTES

CABELLOS PERFECTOS PARA LAS MÁS ALTAS EXIGENCIAS

CAPELLI PERFETTI PER LE MASSIME ESIGENZE

*Liebe Kundinnen,
liebe Kunden,*

Dear clients,

*Chères clientes,
chers clients,*

*Estimadas clientas,
estimados clientes,*

Gentili clienti,

die neue BELLE MADAME
NATURAL HAIR LINE ist
Echthaar in Perfektion.

The new BELLE MADAME
NATURAL HAIR LINE is
human hair in perfection.

la nouvelle COLLECTION
NATURAL HAIR LINE de
BELLE MADAME représente
des cheveux naturels à la
perfection.

la nueva COLECCIÓN
BELLE MADAME
NATURAL HAIR LINE es
sinónimo de un perfecto
cabello natural.

la nuova COLLEZIONE
BELLE MADAME
NATURAL HAIR LINE e
sinonimo di capelli naturali
alla perfezione.

Die BELLE MADAME
NATURAL HAIR LINE
Echthaarmodelle sind von
unserer über 60-jährigen
Firmenphilosophie geprägt,
stets den höchsten
Ansprüchen in Bezug auf
Qualität und Optik gerecht
zu werden. Die Kollektion
besticht durch aparte
Frisuren und Designs
sowie durch ihre
einzigartige Farbvielfalt
und hochwertigste Haare
und Materialien.

Our BELLE MADAME
NATURAL HAIR LINE
styles in human hair
reflect our over 60 years
old corporate philosophy
of always delivering the
highest standards in
quality and looks. This
collection features a
compelling range of
distinctive hairstyles
and designs as well as a
unique variety of colours
as well as highest quality
hair and materials.

NATURAL HAIR LINE de
BELLE MADAME est une
gamme de modèles en
cheveux naturels qui reflète
notre philosophie d'entreprise
de plus de 60 années et vous
offre les exigences les plus
strictes en matière de qualité
et d'esthétique. La collection
séduit par le choix de coiffures
aux stylismes variés, par son
exceptionnelle diversité de
couleurs et par ses cheveux et
matériaux de haute qualité.

Los modelos de cabello
natural de BELLE MADAME
NATURAL HAIR LINE están
impregnados de nuestra
filosofía empresarial tras
más de 60 años haciendo
frente siempre a las máximas
expectativas con respecto
a la calidad y al aspecto. La
colección convence por sus
cortes y diseños especiales,
así como por su exclusiva
diversidad de colores y sus
cabellos y materiales de
máxima calidad.

I modelli realizzati con capelli
naturali di BELLE MADAME
NATURAL HAIR LINE carat-
terizzano la nostra filosofia
aziendale da oltre 60 anni, e
vanno costantemente incon-
tro alle massime esigenze
in fatto di qualità ed estetica.
La collezione seduce con
favolosi tagli e acconciature
nonché con la straordinaria
varietà di colori e capelli e
materiali pregiatissimi.

Entdecken Sie die Welt der
BELLE MADAME NATURAL
HAIR LINE und freuen Sie
sich auf eine Kollektion der
Superlative.

Explore the world of
BELLE MADAME
NATURAL HAIR LINE in
anticipation of a collection
of the superlative.

Découvrez le monde
NATURAL HAIR LINE de
BELLE MADAME et profitez
d'une collection digne de
tous les superlatifs.

Descubra el mundo de
BELLE MADAME NATURAL
HAIR LINE y disfrute de una
excelente colección.

Scoprite il mondo di
BELLE MADAME
NATURAL HAIR LINE e
lasciatevi conquistare da
una collezione superlativa.

*Ihr
Alexander Dening
& Team*

*Yours
Alexander Dening
& Team*

*Votre dévoué
Alexander Dening
et son équipe*

*Alexander Dening
y equipo*

*Il Vostro
Alexander Dening
& Team*

Belle Madame®
Natural Hair Line

by DENING HAIR



EASY-TO-WEAR STYLES 6-41

ADRIANA RH	6
ARABELLA RH	8
ANASTASIA RH	10
MUSETTA RH	12
EVITA RH	14
VALENTINA RH	16
REBECCA RH	18
LUCIA RH	20
GISELLE RH	22
DONNA FT CRH	24
AMELIA SWISS LACE RH	26
ANASTASIA LONG RH	28
ANASTASIA LONG LARGE RH	30
TRAVIATA RH	32
ANASTASIA EXTRA LONG RH	34
ELEKTRA RH	36

LARGE STYLES 38

MUSETTA LARGE RH	38
MUSETTA EXTRA LARGE RH	38
ARABELLA LARGE RH	39
GISELLE LARGE RH	39
ANASTASIA LONG LARGE RH	39

CHILDREN STYLES 40

GILDA RH	40
----------	----

MASTER STYLES 42-45

XENIA SWISS LACE RH	43
TOSCA-RMH	44
DERMA-SOFT-200-RMH	45

EUROPEAN HAIR LINE 46-55

FERRARA	47
RAPUNZEL	52

HAIR PIECES HUMAN HAIR HAARTEILE ECHTHAAR 56-73

EXTENSIONS 74-77

VOLUME-WEFT RH	75
CLIP-IN-HAIR	75
KERATIN-BOND RH	77
TAPE-IN RH	77

HUMAN HAIR QUALITIES ECHTHAAR-QUALITÄTEN 78

WIG CAPS PERÜCKENMONTUREN 80

CARE PRODUCTS PFLEGEPRODUKTE 84

OVERVIEW HAIR COLOURS ÜBERSICHT HAARFARBEN 86

INDEX 87



EASY-TO-WEAR *Styles*

Adriana

ADRIANA RH
Dark-Mocca

ADRIANA RH

●●●●● ◀ S (52-54 cm)

FRONT	SUPER-FRONT
HAIR LENGTH	7,5- 15cm
HAIR VOLUME	115% light-medium
HAIR QUALITY	PREMIUM-REMY-HAIR-2
CAP	ANASTASIA 2

BROWN COLOURS

Dark-Mocca (4)
Mocca-Mix (6/10-6)
Chocolate (8/12/30)

BLOND COLOURS

Chocolate/Cream-Root (10/27/20R+Root8)
Honey-Toast (12/15/25-12)
Vanilla-Root (14/26+Root14)
Danish-Blond-Root (20R/19+Root12)
Champagne-Root (20R/23+Root10)
Swedish-Blond-Root (23A/26+Root16)**

RED COLOURS

Dark-Red-Mix (30/6/27-6)
Terracotta-Gold (30/8/27R-8)
Dark-Auburn-Mix (33/30)
Terracotta-Mix-Root (30/27+Root4)

** Enthält 5% hitzbeständiges Synthetikkaar.
Contains 5% heat-resistant synthetic hair.

EASY-TO-WEAR *Styles*

Arabella



ARABELLA RH
Danish-Blond-Root



ARABELLA RH

●●●●●● < S/M (53-55cm)

FRONT	SUPER-FRONT
HAIR LENGTH	15-20cm
HAIR VOLUME	115% light-medium
HAIR QUALITY	PREMIUM-REMY-HAIR-2
CAP	ANASTASIA 2

BROWN COLOURS

Espresso (2)
Dark-Mocca-Mix (4/8)
Mocca-Mix (6/10-6)
Chocolate-Mix (8/10/27/20)
Medium-Ash-Blond (10/12)

BLOND COLOURS

Chocolate/Cream-Root (10/27/20R+Root8)
Honey-Toast (12/15/25-12)
Danish-Blond-Root (20R/19+Root12)
Champagne-Root (20R/23+Root10)
Swedish-Blond-Root (23A/26+Root16)**

RED COLOURS

Dark-Red-Mix (30/6/27-6)
Terracotta-Gold (30/8/27R-8)
Ruby-Mix (33/32B/135/29)

GREY COLOURS

Dark-Smoke-Grey (39/43+F56)*
Smoke-Grey (43/56-39)*
Light-Smoke-Grey (56/53-39)*

Seite 39 / Page 39

ARABELLA LARGE RH

●●●●●● < L (56-58cm)

FRONT	SUPER-FRONT
HAIR LENGTH	15-20cm
HAIR VOLUME	115% light-medium
HAIR QUALITY	PREMIUM-REMY-HAIR-2
CAP	ANASTASIA 2

BROWN COLOURS

Dark-Mocca (4)
Mocca-Mix (6/10-6)
Chocolate-Mix (8/10/27/20)

BLOND COLOURS

Chocolate/Cream-Root (10/27/20R+Root8)
Honey-Mix-Root (12A/25R/28+Root10/12)
Vanilla-Mix-Root (20/12A/23A+Root10/12A)
Swedish-Blond-Root (23A/26+Root16)**

RED COLOURS

Dark-Red-Mix (30/6/27-6)
Terracotta-Gold (30/8/27R-8)

* Weißanteil aus hitzebeständigem Synthetik.
White hair made of heat-resistant synthetic fibre.

** Enthält 5% hitzebeständiges Synthetikhaar.
Contains 5% heat-resistant synthetic hair.

ARABELLA LARGE RH
Chocolate-Mix

Anastasia

ANASTASIA RH
Swedish-Blond-Root



ANASTASIA RH

●●●●●●●● < S (52-54cm)

FRONT	SUPER-FRONT
HAIR LENGTH	10-17,5cm
HAIR VOLUME	100% light
HAIR QUALITY	PREMIUM-REMY-HAIR-2
CAP	ANASTASIA 2

BROWN COLOURS

Dark-Mocca (4)
Mocca-Mix (6/10-6)
Chocolate (8/12/30)
Medium-Ash-Blond (10/12)

BLOND COLOURS

Chocolate/Cream-Root (10/27/20R+Root8)
Honey-Toast (12/15/25-12)
Vanilla-Root (14/26+Root14)
Light-Blond-Mix (15/20/23+Root11)
Danish-Blond-Root (20R/19+Root12)
Champagne-Root (20R/23+Root10)
Swedish-Blond-Root (23A/26+Root16)**

RED COLOURS

Dark-Red-Mix (30/6/27-6)
Terracotta-Gold (30/8/27R-8)
Dark-Auburn-Mix (33/30)
Terracotta-Mix-Root (30/27+Root4)

** Enthält 5% hitzbeständiges Synthetikhhaar.
Contains 5% heat-resistant synthetic hair.

Musetta

MUSETTA RH
Chocolate/Cream-Root





CREATIVE STYLING

MUSETTA RH
Danish-Blond-Root



CREATIVE STYLING

MUSETTA LARGE RH
Chocolate/Cream-Root



MUSETTA EXTRA LARGE RH
Dark-Auburn-Mix

Seite 38 / Page 38

Seite 38 / Page 38

MUSETTA RH

●●●●● < S/M (53-55cm)

FRONT	SUPER-FRONT
HAIR LENGTH	17,5-23cm
HAIR VOLUME	115% light-medium
HAIR QUALITY	PREMIUM-REMY-HAIR-2
CAP	ANASTASIA 2

BROWN COLOURS

- Espresso (2)
- Dark-Mocca-Mix (4/8)
- Mocca-Mix (6/10-6)
- Chocolate-Mix (8/10/27/20)
- Medium-Ash-Blond (10/12)

BLOND COLOURS

- Chocolate/Cream-Root (10/27/20R+Root8)
- Honey-Mix (12A/25R/28)
- Light-Blond-Mix (15/20/23+Root11)
- Danish-Blond-Root (20R/19+Root12)
- Champagne-Root (20R/23+Root10)
- Swedish-Blond-Mix (25R/22H-20+Root16)
- Swedish-Blond-Root (23A/26+Root16)**

RED COLOURS

- Terracotta-Gold (30/8/27R-8)
- Dark-Auburn-Mix (33/30)
- Ruby-Mix (33/32B/135/29)

GREY COLOURS

- Dark-Smoke-Grey (39/43+F56)*
- Smoke-Grey (43/56-39)*
- Light-Smoke-Grey (56/53-39)*

MUSETTA LARGE RH

●●●●● < L/XL (57-59cm)

FRONT	SUPER-FRONT
HAIR LENGTH	20,5-28cm
HAIR VOLUME	115% light-medium
HAIR QUALITY	PREMIUM-REMY-HAIR-2
CAP	ANASTASIA 2

BROWN COLOURS

- Espresso (2)
- Dark-Mocca-Mix (4/8)
- Mocca-Mix (6/10-6)
- Chocolate-Mix (8/10/27/20)
- Medium-Ash-Blond (10/12)

BLOND COLOURS

- Chocolate/Cream-Root (10/27/20R+Root8)
- Honey-Mix (12A/25R/28)
- Light-Blond-Mix (15/20/23+Root11)
- Danish-Blond-Root (20R/19+Root12)
- Champagne-Root (20R/23+Root10)
- Swedish-Blond-Root (23A/26+Root16)**

RED COLOURS

- Terracotta-Gold (30/8/27R-8)
- Dark-Auburn-Mix (33/30)
- Ruby-Mix (33/32B/135/29)

MUSETTA EXTRA LARGE RH

●●●●● < XL (59-61cm)

FRONT	SUPER-FRONT
HAIR LENGTH	23-28cm
HAIR VOLUME	115% light-medium
HAIR QUALITY	PREMIUM-REMY-HAIR-2
CAP	ANASTASIA 2

BROWN COLOURS

- Espresso (2)
- Dark-Mocca-Mix (4/8)
- Mocca-Mix (6/10-6)
- Chocolate-Mix (8/10/27/20)
- Medium-Ash-Blond (10/12)

BLOND COLOURS

- Chocolate/Cream-Root (10/27/20R+Root8)
- Honey-Mix (12A/25R/28)
- Champagne-Root (20R/23+Root10)

RED COLOURS

- Dark-Auburn-Mix (33/30)



* Weißanteil aus hitzebeständigem Synthetik.
White hair made of heat-resistant synthetic fibre.

** Enthält 5% hitzebeständiges Synthetikhaar.
Contains 5% heat-resistant synthetic hair.

Evita

EVITA RH
Chocolate-Mix

EVITA RH

●●●●●●●● < M (54-56 cm)

FRONT	SUPER-FRONT
HAIR LENGTH	22,5-30 cm
HAIR VOLUME	115 - 130% light-medium to medium
HAIR QUALITY	PREMIUM-REMY-HAIR-2
CAP	ANASTASIA 2

BROWN COLOURS

- Espresso (2)
- Dark-Mocca-Mix (4/8)
- Mocca-Mix (6/10-6)
- Chocolate-Mix (8/10/27/20)
- Medium-Ash-Blond (10/12)

BLOND COLOURS

- Chocolate/Cream-Root (10/27/20R+Root8)
- Chocolate/Honey-Ombre (8/10/27/20-12A/25R/28)
- Honey-Mix (12A/25R/28)
- Light-Blond-Mix (15/20/23+Root11)
- Danish-Blond-Root (20R/19+Root12)
- Champagne-Root (20R/23+Root10)
- Swedish-Blond-Mix (25R/22H-20+Root16)
- Swedish-Blond-Root (23A/26+Root16)**

RED COLOURS

- Terracotta-Gold (30/8/27R-8)
- Dark-Auburn-Mix (33/30)
- Ruby-Mix (33/32B/135/29)

GREY COLOURS

- Dark-Smoke-Grey (39/43+F56)*
- Smoke-Grey (43/56-39)*
- Light-Smoke-Grey (56/53-39)*

OMBRE COLOURS

- Chocolate/Honey-Ombre (8/10/27/20-12A/25R/28)

CREATIVE STYLING

EVITA RH
Chocolate-Mix



* Weißanteil aus hitzebeständigem Synthetik.
White hair made of heat-resistant synthetic fibre.

** Enthält 5% hitzebeständiges Synthetikhaar.
Contains 5% heat-resistant synthetic hair.

VALENTINA RH
Mocca-Mix

Valentina

VALENTINA RH Caramel-Root CREATIVE STYLING



VALENTINA RH

●●●●●● < S/M (53-55cm)

FRONT	SUPER-FRONT
HAIR LENGTH	35cm
HAIR VOLUME	115% light-medium
HAIR QUALITY	PREMIUM-REMY-HAIR-2
CAP	ANASTASIA 2

BROWN COLOURS

- Espresso (2)
- Dark-Mocca (4)
- Mocca-Mix (6/10-6)
- Chocolate (8/12/30)

BLOND COLOURS

- Caramel-Root (12/27/22H+Root10)
- Honey-Mix (12A/25R/28)
- Light-Blond-Mix (15/20/23+Root11)
- Champagne-Root (20R/23+Root10)
- Swedish-Blond-Root (23A/26+Root16)**

RED COLOURS

- Dark-Auburn-Mix (33/30)
- Ruby-Mix (33/32B/135/29)



360°

VALENTINA RH
Mocca-Mix

** Enthält 5% hitzbeständiges Synthetikaar.
Contains 5% heat-resistant synthetic hair.

Rebecca

REBECCA RH
Light-Blond-Mix

REBECCA RH Light-Copper-Mix CREATIVE STYLING



REBECCA RH

●●●●●● M (54-56 cm)

FRONT	PU-FRONT
HAIR LENGTH	25-35 cm
HAIR VOLUME	115-130% light-medium to medium
HAIR QUALITY	PREMIUM-REMY-HAIR-2
CAP	REBECCA
	Soft-Cap with PU-Front
	Top = double-layer Silk
	Temples + nape = velvet cloth

BROWN COLOURS

- Espresso-Mix (2/4)
- Dark-Mocca-Mix (4/8)
- Mocca-Mix (6/10-6)
- Chocolate-Mix (8/10/27/20)

BLOND COLOURS

- Caramel-Root (12/27/22H+Root10)
- Honey-Mix (12A/25R/28)
- Light-Blond-Mix (15/20/23+Root11)
- Champagne-Root (20R/23+Root10)
- Swedish-Blond-Mix (25R/22H-20+Root16)

RED COLOURS

- Light-Copper-Mix (30/27)



360°



REBECCA RH
Light-Blond-Mix



LUCIA RH
Dark-Brown/Copper-Ombre

Lucia

360°



LUCIA RH

●●●●●● < M (54-56 cm)

FRONT	SUPER-FRONT
HAIR LENGTH	23-30 cm back of head 33-35 cm
HAIR VOLUME	115-130% light-medium to medium
HAIR QUALITY	PREMIUM-REMY-HAIR-2
CAP	ANASTASIA 2

BROWN COLOURS

- Espresso (2)
- Dark-Mocca-Mix (4/8)
- Mocca-Mix (6/10-6)
- Chocolate-Mix (8/10/27/20)
- Medium-Ash-Blond (10/12)

BLOND COLOURS

- Chocolate/Cream-Root (10/27/20R+Root8)
- Chocolate/Honey-Ombre (8/10/27/20-12A/25R/28)
- Honey-Mix (12A/25R/28)
- Danish-Blond-Root (20R/19+Root12)
- Champagne-Root (20R/23+Root10)
- Swedish-Blond-Root (23A/26+Root16)**

RED COLOURS

- Dark-Brown/Copper-Ombre (8-27R/29)
- Terracotta-Gold (30/8/27R-8)
- Dark-Auburn-Mix (33/30)

OMBRE COLOURS

- Dark-Brown/Copper-Ombre (8-27R/29)
- Chocolate/Honey-Ombre (8/10/27/20-12A/25R/28)



LUCIA RH
Terracotta-Gold

** Enthält 5% hitzbeständiges Synthetikaar.
Contains 5% heat-resistant synthetic hair.

Giselle



360°



GISELLE LARGE RH
Swedish-Blond-Root

GISELLE RH

●●●●○● ◀ S/M (53-55cm)

FRONT	SUPER-FRONT
HAIR LENGTH	20-30cm
HAIR VOLUME	115-130% light-medium to medium
HAIR QUALITY	PREMIUM-REMY-HAIR-2
CAP	GISELLE Mono-Top + Wefts

BROWN COLOURS

- Espresso (2)
- Dark-Mocca (4)
- Dark-Mocca-Mix (4/8)
- Mocca-Mix (6/10-6)
- Chocolate (8/12/30)

BLOND COLOURS

- Caramel-Root (12/27/22H+Root10)
- Chestnut/Blond-Ombre (30/31-28)
- Honey-Mix (12A/25R/28)
- Danish-Blond-Root (20R/19+Root12)
- Vanilla-Mix-Root (20/12A/23A+Root10/12A)
- Champagne-Root (20R/23+Root10)
- Swedish-Blond-Root (23A/26+Root16)**

RED COLOURS

- Terracotta-Gold (30/8/27R-8)
- Cherry-Root (33/130+Root4)

OMBRE COLOURS

- Chestnut/Blond-Ombre (30/31-28)

Seite 39 / Page 39

GISELLE LARGE RH

●●●●○● ◀ L/XL (57-59cm)

FRONT	SUPER-FRONT
HAIR LENGTH	20-30cm
HAIR VOLUME	115-130% light-medium to medium
HAIR QUALITY	PREMIUM-REMY-HAIR-2
CAP	GISELLE Mono-Top + Wefts

BROWN COLOURS

- Espresso (2)
- Dark-Mocca (4)
- Mocca-Mix (6/10-6)
- Chocolate (8/12/30)

BLOND COLOURS

- Caramel-Root (12/27/22H+Root10)
- Honey-Mix (12A/25R/28)
- Champagne-Root (20R/23+Root10)
- Swedish-Blond-Root (23A/26+Root16)**

RED COLOURS

- Terracotta-Gold (30/8/27R-8)

GISELLE RH
Caramel-Root



CREATIVE STYLING

GISELLE RH

Honey-Mix

** Enthält 5% hitzbeständiges Synthetikkaar.
Contains 5% heat-resistant synthetic hair.

Donna

DONNA FT CRH
Dark-Auburn-Mix



DONNA FT CRH
Swedish-Mix

DONNA FT CRH



DONNA FT CRH

●●●●● S (52-54 cm)

FRONT	DOUBLE LAYER SUPER-FRONT
HAIR LENGTH	35-40 cm
HAIR VOLUME	100% light
HAIR QUALITY	PREMIUM-REMY-HAIR-4
CAP	DONNA FT FT = French-Top

BROWN COLOURS

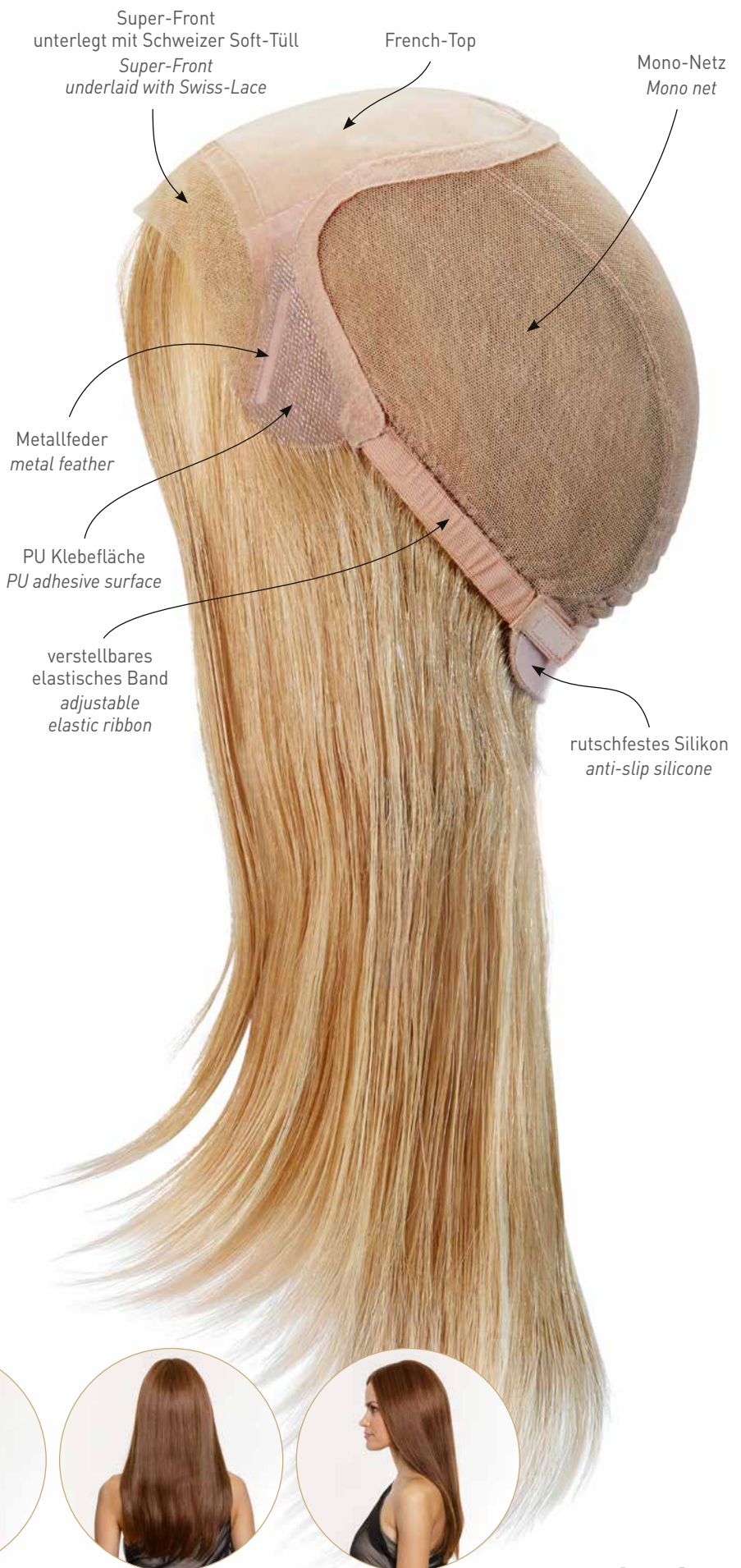
- Dark-Mocca (4)
- Mocca-Mix (6/10-6)
- Chocolate (8/12/30)
- Chocolate-Mix (8/10/27/20)
- Medium-Ash-Blond (10/12)

BLOND COLOURS

- Chocolate/Cream-Root (10/27/20R+Root8)
- Honey-Mix (12A/25R/28)
- Light-Blond-Mix (15/20/23+Root11)
- Champagne-Root (20R/23+Root10)
- Swedish-Mix (23A/26)

RED COLOURS

- Dark-Auburn-Mix (33/30)



360°

DONNA FT CRH
Dark-Auburn-Mix



EASY-TO-WEAR *Styles*

Amelia

AMELIA SWISS LACE RH
Light-Blond-Mix

CREATIVE STYLING

AMELIA SWISS LACE RH - Light-Blond-Mix





AMELIA
SWISS LACE
RH
Espresso

AMELIA SWISS LACE RH



AMELIA SWISS LACE RH

●●●●● ◀ S (52-54 cm)

FRONT	SUPER-FRONT PLUS
HAIR LENGTH	35-40cm
HAIR VOLUME	100% light
HAIR QUALITY	PREMIUM-REMY-HAIR-2
CAP	AMELIA SWISS LACE

BROWN COLOURS

- Espresso (2)
- Dark-Mocca (4)
- Mocca-Mix (6/10-6)
- Chocolate (8/12/30)
- Chocolate-Mix (8/10/27/20)

BLOND COLOURS

- Chocolate/Cream-Root (10/27/20R+Root8)
- Honey-Mix (12A/25R/28)
- Light-Blond-Mix (15/20/23+Root11)
- Champagne-Root (20R/23+Root10)
- Swedish-Mix (23A/26)

RED COLOURS

- Terracotta-Gold (30/8/27R-8)

360° AMELIA SWISS LACE RH
Light-Blond-Mix



Anastasia



ANASTASIA LONG RH
Vanilla-Mix-Root

ANASTASIA LONG RH
Chocolate

CREATIVE STYLING

ANASTASIA LONG RH

●●●●● S (52-54 cm)

FRONT	SUPER-FRONT
HAIR LENGTH	35-40cm
HAIR VOLUME	100% light
HAIR QUALITY	PREMIUM-REMY-HAIR-2
CAP	ANASTASIA 2

BROWN COLOURS

- Espresso (2)
- Dark-Mocca (4)
- Mocca-Mix (6/10-6)
- Chocolate (8/12/30)
- Chocolate-Mix (8/10/27/20)
- Medium-Ash-Blond (10/12)

BLOND COLOURS

- Chocolate/Cream-Root (10/27/20R+Root8)
- Chocolate/Honey-Ombre (8/10/27/20-12A/25R/28)
- Chestnut/Blond-Ombre (30/31-28)
- Honey-Mix-Root (12A/25R/28+Root10/12)
- Honey-Mix (12A/25R/28)
- Light-Blond-Mix (15/20/23+Root11)
- Danish-Blond-Root (20R/19+Root12)
- Danish-Blond (19/20R)
- Vanilla-Mix-Root (20/12A/23A+Root10/12A)
- Champagne-Root (20R/23+Root10)
- Swedish-Blond-Mix (25R/22H-20+Root16)
- Swedish-Blond-Root (23A/26+Root16)**

RED COLOURS

- Dark-Auburn-Mix (33/30)
- Terracotta-Mix-Root (30/27+Root4)

OMBRE COLOURS

- Chocolate/Honey-Ombre (8/10/27/20-12A/25R/28)
- Chestnut/Blond-Ombre (30/31-28)

mehr / more ANASTASIA LONG RH  nächste Seite / next page

** Enthält 5% hitzbeständiges Synthetikhaar.
Contains 5% heat-resistant synthetic hair.

EASY-TO-WEAR *Styles*

29

Anastasia



ANASTASIA LONG RH
Chocolate/Honey-Ombre

ANASTASIA LONG LARGE RH

●●●●●● < L [56-58cm]

FRONT	SUPER-FRONT
HAIR LENGTH	35-40cm
HAIR VOLUME	115-130% light-medium to medium
HAIR QUALITY	PREMIUM-REMY-HAIR-2
CAP	ANASTASIA 2

BROWN COLOURS

- Dark-Mocca (4)
- Mocca-Mix (6/10-6)
- Chocolate (8/12/30)

BLOND COLOURS

- Chocolate/Cream-Root (10/27/20R+Root8)
- Chocolate/Honey-Ombre (8/10/27/20-12A/25R/28)
- Honey-Mix-Root (12A/25R/28+Root10/12)
- Light-Blond-Mix (15/20/23+Root11)
- Vanilla-Mix-Root (20/12A/23A+Root10/12A)
- Swedish-Blond-Root (23A/26+Root16)**

RED COLOURS

- Dark-Auburn-Mix (33/30)

OMBRE COLOURS

- Chocolate/Honey-Ombre (8/10/27/20-12A/25R/28)

ANASTASIA LONG RH

●●●●●● < S [52-54cm]

FRONT	SUPER-FRONT
HAIR LENGTH	35-40cm
HAIR VOLUME	100% light
HAIR QUALITY	PREMIUM-REMY-HAIR-2
CAP	ANASTASIA 2

BROWN COLOURS

- Espresso (2)
- Dark-Mocca (4)
- Mocca-Mix (6/10-6)
- Chocolate (8/12/30)
- Chocolate-Mix (8/10/27/20)
- Medium-Ash-Blond (10/12)

BLOND COLOURS

- Chocolate/Cream-Root (10/27/20R+Root8)
- Chocolate/Honey-Ombre (8/10/27/20-12A/25R/28)
- Chestnut/Blond-Ombre (30/31-28)
- Honey-Mix-Root (12A/25R/28+Root10/12)
- Honey-Mix (12A/25R/28)
- Light-Blond-Mix (15/20/23+Root11)
- Danish-Blond-Root (20R/19+Root12)
- Danish-Blond (19/20R)
- Vanilla-Mix-Root (20/12A/23A+Root10/12A)
- Champagne-Root (20R/23+Root10)
- Swedish-Blond-Mix (25R/22H-20+Root16)
- Swedish-Blond-Root (23A/26+Root16)**

RED COLOURS

- Dark-Auburn-Mix (33/30)
- Terracotta-Mix-Root (30/27+Root4)

OMBRE COLOURS

- Chocolate/Honey-Ombre (8/10/27/20-12A/25R/28)
- Chestnut/Blond-Ombre (30/31-28)

mehr / more ANASTASIA LONG RH < vorherige Seite / previous page

** Enthält 5% hitzbeständiges Synthetikkaar.
Contains 5% heat-resistant synthetic hair.



ANASTASIA LONG LARGE RH
Honey-Mix-Root

Belle Madame®

Natural Hair Line

Traviata

TRAVIATA RH
Mocca-Mix

TRAVIATA RH

●●●●●● < S/M (53-55 cm)

FRONT	SUPER-FRONT
HAIR LENGTH	35-40 cm
HAIR VOLUME	150% medium-full
HAIR QUALITY	PREMIUM-REMY-HAIR-2
CAP	TRAVIATA S
Net side/back coated with silicone	

BROWN COLOURS

- Espresso (2)
- Dark-Mocca (4)
- Mocca-Mix (6/10-6)
- Chocolate (8/12/30)
- Chocolate-Mix (8/10/27/20)

BLOND COLOURS

- Chocolate/Cream-Root (10/27/20R+Root8)
- Chocolate/Honey-Ombre (8/10/27/20-12A/25R/28)
- Honey-Mix (12A/25R/28)
- Danish-Blond-Root (20R/19+Root12)
- Champagne-Root (20R/23+Root10)
- Swedish-Blond-Root (23A/26+Root16)**

RED COLOURS

- Terracotta-Gold (30/8/27R-8)

OMBRE COLOURS

- Chocolate/Honey-Ombre (8/10/27/20-12A/25R/28)

360°



TRAVIATA RH
Mocca-Mix



** Enthält 5% hitzbeständiges Synthetikkaar.
Contains 5% heat-resistant synthetic hair.

BelleMadame®
Natural Hair Line

Anastasia

ANASTASIA EXTRA LONG RH
Mocca-Mix

ANASTASIA EXTRA LONG RH

●●●●●●●●●● < 5 (52-54cm)

FRONT	SUPER-FRONT
HAIR LENGTH	45-50cm
HAIR VOLUME	100% light
HAIR QUALITY	PREMIUM-REMY-HAIR-2
CAP	ANASTASIA 2

BROWN COLOURS

- Espresso (2)
- Dark-Mocca (4)
- Mocca-Mix (6/10-6)
- Chocolate (8/12/30)

BLOND COLOURS

- Chocolate/Cream-Root (10/27/20R+Root8)
- Honey-Mix (12A/25R/28)
- Light-Blond-Mix (15/20/23+Root11)
- Champagne-Root (20R/23+Root10)
- Swedish-Blond-Root (23A/26+Root16)**

RED COLOURS

- Dark-Auburn-Mix (33/30)



360°



** Enthält 5% hitzbeständiges Synthetikaar.
Contains 5% heat-resistant synthetic hair.

Belle Madame®
Natural Hair Line

ELEKTRA RH
Champagne-Root

Elektra



ELEKTRA RH

●●●●●●●● < M (54-56 cm)

FRONT	SUPER-FRONT
HAIR LENGTH	43-50 cm
HAIR VOLUME	115-130% light-medium to medium
HAIR QUALITY	PREMIUM-REMY-HAIR-2
CAP	ANASTASIA 2

BROWN COLOURS

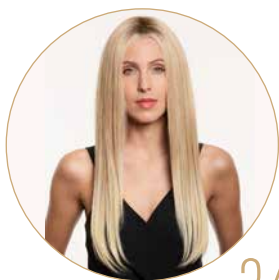
Espresso (2)
Dark-Mocca-Mix (4/8)
Mocca-Mix (6/10-6)
Chocolate-Mix (8/10/27/20)

BLOND COLOURS

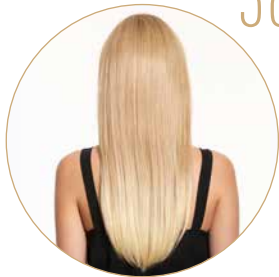
Chocolate/Cream-Root (10/27/20R+Root8)
Honey-Mix-Root (12A/25R/28+Root10/12)
Honey-Mix (12A/25R/28)
Danish-Blond-Root (20R/19+Root12)
Champagne-Root (20R/23+Root10)
Swedish-Blond-Mix (25R/22H-20+Root16)
Swedish-Blond-Root (23A/26+Root16)**

RED COLOURS

Terracotta-Gold (30/8/27R-8)
Dark-Auburn-Mix (33/30)



360°



** Enthält 5% hitzbeständiges Synthetikkaar.
Contains 5% heat-resistant synthetic hair.

EASY-TO-WEAR *Styles*

LARGE

Styles

MUSETTA LARGE RH

●●●●●● < L/XL (57-59cm)

FRONT	SUPER-FRONT
HAIR LENGTH	20,5 - 28 cm
HAIR VOLUME	115 % light-medium
HAIR QUALITY	PREMIUM-REMY-HAIR-2
CAP	ANASTASIA 2

BROWN COLOURS

- Espresso (2)
- Dark-Mocca-Mix (4/8)
- Mocca-Mix (6/10-6)
- Chocolate-Mix (8/10/27/20)
- Medium-Ash-Blond (10/12)

BLOND COLOURS

- Chocolate/Cream-Root (10/27/20R+Root8)
- Honey-Mix (12A/25R/28)
- Light-Blond-Mix (15/20/23+Root11)
- Danish-Blond-Root (20R/19+Root12)
- Champagne-Root (20R/23+Root10)
- Swedish-Blond-Root (23A/26+Root16)**

RED COLOURS

- Terracotta-Gold (30/8/27R-8)
- Dark-Auburn-Mix (33/30)
- Ruby-Mix (33/32B/135/29)

MUSETTA EXTRA LARGE RH

●●●●●● < XL (59-61cm)

FRONT	SUPER-FRONT
HAIR LENGTH	23 - 28 cm
HAIR VOLUME	115 % light-medium
HAIR QUALITY	PREMIUM-REMY-HAIR-2
CAP	ANASTASIA 2

BROWN COLOURS

- Espresso (2)
- Dark-Mocca-Mix (4/8)
- Mocca-Mix (6/10-6)
- Chocolate-Mix (8/10/27/20)
- Medium-Ash-Blond (10/12)

BLOND COLOURS

- Chocolate/Cream-Root (10/27/20R+Root8)
- Honey-Mix (12A/25R/28)
- Champagne-Root (20R/23+Root10)

RED COLOURS

- Dark-Auburn-Mix (33/30)

MUSETTA LARGE RH
Chocolate/Cream-Root

CREATIVE STYLING

MUSETTA EXTRA LARGE RH
Dark-Auburn-Mix



ARABELLA LARGE RH
Chocolate-Mix



GISELLE LARGE RH
Swedish-Blond-Root



ANASTASIA LONG LARGE RH
Honey-Mix-Root

ARABELLA LARGE RH

●●●●●●●● < L (56-58cm)

FRONT	SUPER-FRONT
HAIR LENGTH	15-20cm
HAIR VOLUME	115% light-medium
HAIR QUALITY	PREMIUM-REMY-HAIR-2
CAP	ANASTASIA 2

BROWN COLOURS

Dark-Mocca (4)
Mocca-Mix (6/10-6)
Chocolate-Mix (8/10/27/20)

BLOND COLOURS

Chocolate/Cream-Root (10/27/20R+Root8)
Honey-Mix-Root (12A/25R/28+Root10/12)
Vanilla-Mix-Root (20/12A/23A+Root10/12A)
Swedish-Blond-Root (23A/26+Root16)**

RED COLOURS

Dark-Red-Mix (30/6/27-6)
Terracotta-Gold (30/8/27R-8)

GISELLE LARGE RH

●●●●○●● < L/XL (57-59cm)

FRONT	SUPER-FRONT
HAIR LENGTH	20-30cm
HAIR VOLUME	115-130% light-medium to medium
HAIR QUALITY	PREMIUM-REMY-HAIR-2
CAP	GISELLE Mono-Top + Wefts

BROWN COLOURS

Espresso (2)
Dark-Mocca (4)
Mocca-Mix (6/10-6)
Chocolate (8/12/30)

BLOND COLOURS

Caramel-Root (12/27/22H+Root10)
Honey-Mix (12A/25R/28)
Champagne-Root (20R/23+Root10)
Swedish-Blond-Root (23A/26+Root16)**

RED COLOURS

Terracotta-Gold (30/8/27R-8)

ANASTASIA LONG LARGE RH

●●●●●●●● < L (56-58cm)

FRONT	SUPER-FRONT
HAIR LENGTH	35-40cm
HAIR VOLUME	115-130% light-medium to medium
HAIR QUALITY	PREMIUM-REMY-HAIR-2
CAP	ANASTASIA 2

BROWN COLOURS

Dark-Mocca (4)
Mocca-Mix (6/10-6)
Chocolate (8/12/30)

BLOND COLOURS

Chocolate/Cream-Root (10/27/20R+Root8)
Chocolate/Honey-Ombre (8/10/27/20-12A/25R/28)
Honey-Mix-Root (12A/25R/28+Root10/12)
Light-Blond-Mix (15/20/23+Root11)
Vanilla-Mix-Root (20/12A/23A+Root10/12A)
Swedish-Blond-Root (23A/26+Root16)**

RED COLOURS

Dark-Auburn-Mix (33/30)

OMBRE COLOURS

Chocolate/Honey-Ombre (8/10/27/20-12A/25R/28)

** Enthält 5% hitzbeständiges Synthetikaar.
Contains 5% heat-resistant synthetic hair.



GILDA RH
Champagne

Gilda

GILDA RH

●●●●● < XS (49-51cm)

FRONT	SUPER-FRONT
HAIR LENGTH	30-35cm
HAIR VOLUME	100% light
HAIR QUALITY	PREMIUM-REMY-HAIR-2
CAP	ANASTASIA 2

BROWN COLOURS

Dark-Mocca (4)
 Mocca-Mix (6/10-6)
 Chocolate-Mix (8/10/27/20)
 Medium-Ash-Blond (10/12)

BLOND COLOURS

Chocolate/Cream-Root (10/27/20R+Root8)
 Chocolate/Honey-Ombre
 (8/10/27/20-12A/25R/28)
 Honey-Mix (12A/25R/28)
 Champagne-Root (20R/23+Root10)
 Champagne (20R/23)
 Swedish-Blond-Root (23A/26+Root16)**

RED COLOURS

Dark-Auburn-Mix (33/30)

OMBRE COLOURS

Chocolate/Honey-Ombre
 (8/10/27/20-12A/25R/28)



GILDA RH
 Champagne



GILDA RH
 Champagne-Root

** Enthält 5% hitzbeständiges Synthetikkaar.
 Contains 5% heat-resistant synthetic hair.

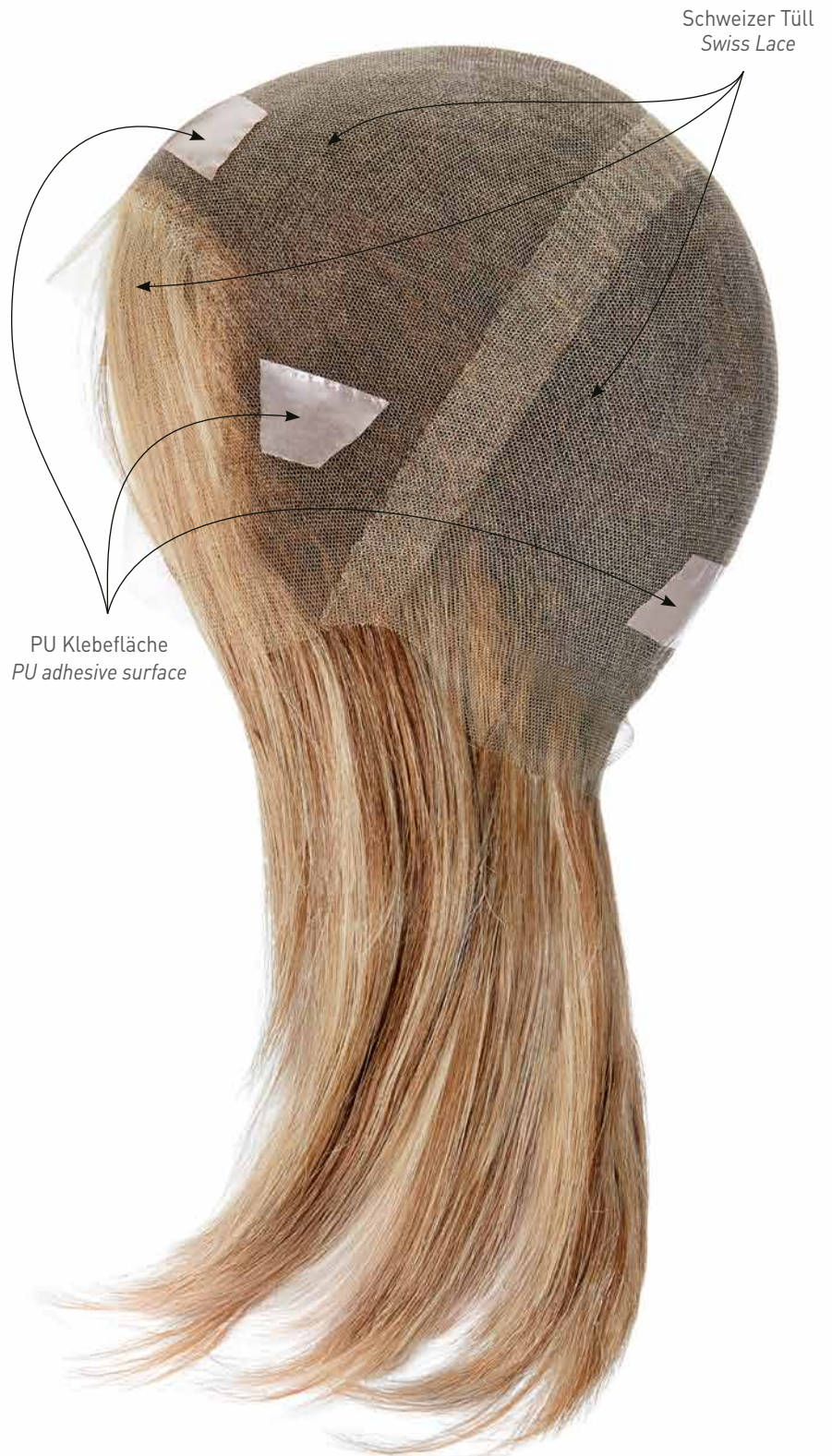


MASTER *Styles*

XENIA SWISS LACE RH



XENIA SWISS LACE RH
Chocolate/Cream-Root



XENIA SWISS LACE RH

●●●●● ◀ S [52-53cm]

FRONT	SUPER-FRONT PLUS
HAIR LENGTH	22,5-30cm
HAIR VOLUME	115-130% light-medium to medium
HAIR QUALITY	PREMIUM-REMY-HAIR-2
CAP	XENIA SWISS LACE

BROWN COLOURS

Mocca-Mix (6/10-6)
Chocolate-Mix (8/10/27/20)

BLOND COLOURS

Chocolate/Cream-Root (10/27/20R+Root8)
Honey-Mix (12A/25R/28)
Vanilla-Mix-Root (20/12A/23A+Root10/12A)



360°

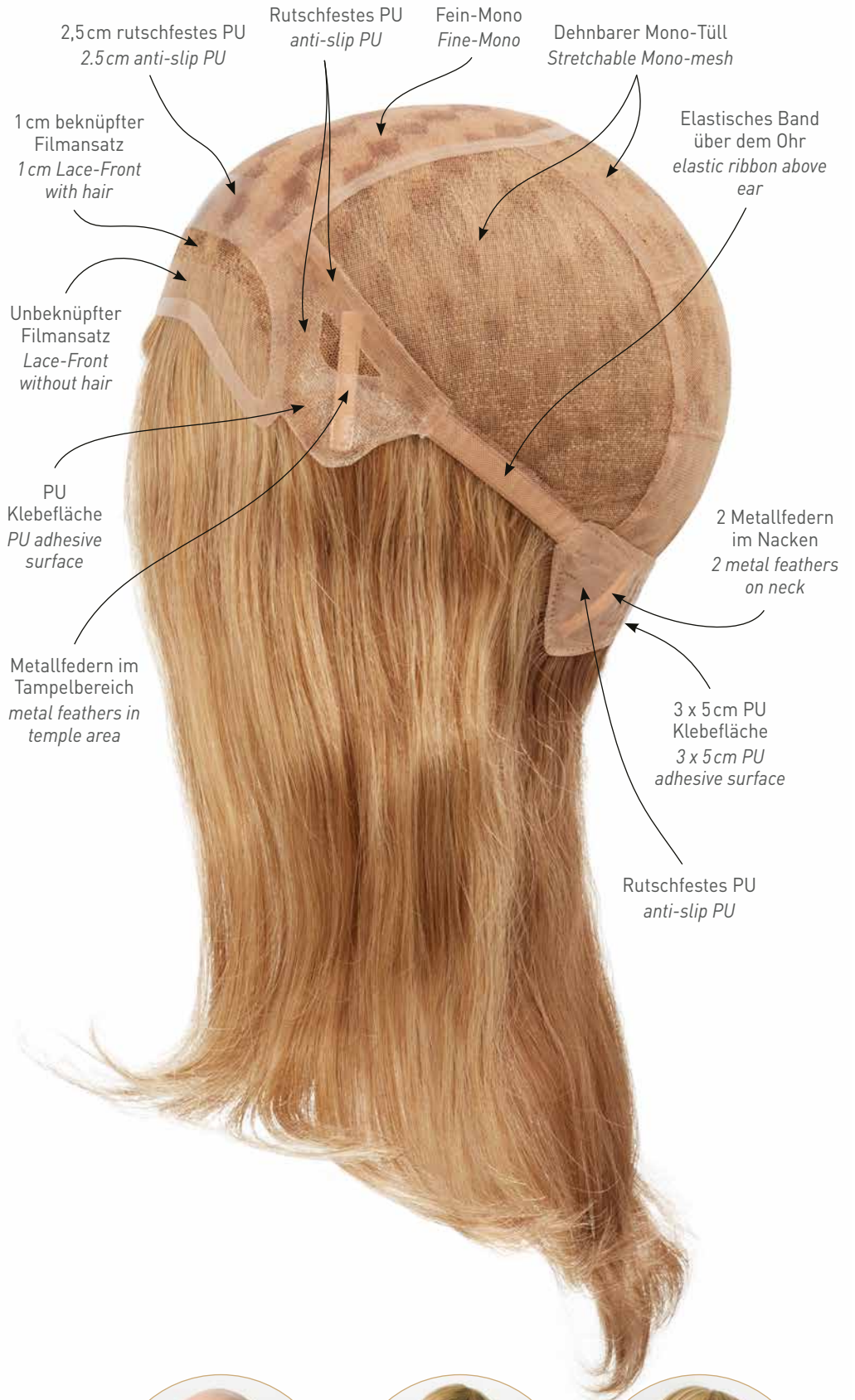
XENIA SWISS LACE RH
Chocolate/Cream-Root

MASTER *Styles*

TOSCA-RMH



TOSCA-RMH
Honey-Mix



TOSCA-RMH

●●●●●●●● ●● S/M (53-55cm)

FRONT	SUPER-FRONT PLUS
HAIR LENGTH	30 - 35 cm
HAIR VOLUME	115 - 130 % light-medium to medium
HAIR QUALITY	PREMIUM-REMY-HAIR-3
CAP	TOSCA

BROWN COLOURS

- Dark-Mocca (4)
- Mocca-Mix (6/10-6)
- Light-Brown (8)
- Chocolate-Mix (8/10/27/20)

BLOND COLOURS

- Medium-Ash-Blond (10/12)
- Chocolate/Cream-Root (10/27/20R+Root8)
- Honey-Mix (12A/25R/28)
- Light-Blond-Mix (15/20/23+Root11)
- Champagne-Root (20R/23+Root10)
- Swedish-Mix (23A/26)

RED COLOURS

- Brown-Red-Mix (6/30)
- Light-Copper-Mix (30/27)



DERMA-SOFT-200-RMH



DERMA-SOFT-200-RMH

●●●●● < M (54-55cm)

FRONT	SUPER-FRONT
HAIR LENGTH	25-35cm
HAIR VOLUME	115-130% light-medium to medium
HAIR QUALITY	PREMIUM-REMY-HAIR-3
CAP	DERMA-SOFT-200

BROWN COLOURS

- Dark-Mocca (4)
- Mocca-Mix (6/10-6)
- Light-Brown (8)
- Chocolate-Mix (8/10/27/20)

BLOND COLOURS

- Chocolate/Cream-Root (10/27/20R+Root8)
- Honey-Mix (12A/25R/28)
- Light-Blond-Mix (15/20/23+Root11)
- Champagne-Root (20R/23+Root10)
- Swedish-Mix (23A/26)

RED COLOURS

- Brown-Red-Mix (6/30)
- Dark-Auburn-Mix (33/30)



**Die EUROPEAN HAIR LINE
setzt neue Maßstäbe
in Bezug auf Hochwertigkeit!**

Die Perücken sind aus unbehandeltem
oder schonend präpariertem
europäischen Echthaar gefertigt
und sind die luxuriöseste Linie
im hochwertigen Sofortprogramm.

Belle  Madamé[®]
European Hair Line

**The EUROPEAN HAIR LINE
sets new standards
in terms of high quality!**

The wigs are made of untreated
or carefully processed
European human hair and are
the most luxurious line in the
high-quality ex stock program.

SEITE
PAGE

48 FERRARA

FERRARA Perücken sind aus EURO-REMY-HAAR – einem erstklassig präparierten Europäischen Echthaar. Das Haar wird schonend veredelt und maximal bis zu zwei Farbstufen verändert. Die schonende Präparation realisiert gleichbleibende Haarfarben und Haarlängen.

FERRARA wigs are made from EURO-REMY-HAIR – a first-class processed European Human Hair. The hair is gently refined and the hair colour is changed up to a maximum of two grades. The gentle preparation realizes consistent hair colours and hair lengths.

FERRARA-33
Medium-Blond-Mix

SEITE
PAGE

52 RAPUNZEL

RAPUNZEL Perücken sind aus EURO-ROH-SCHNITTHAAR – einem unbehandelten und nicht gefärbten Europäischen Echthaar. Das Haar stammt aus der Charity-Aktion „RAPUNZEL“ des Bundesverbandes der Zweithaar-Spezialisten e.V. und daher vorwiegend aus Deutschland.

RAPUNZEL wigs are made from EURO-RAW-HAIR – an untreated and not coloured European Human Hair. The hair comes from the charity campaign "RAPUNZEL" of the German Association of Alternative Hair Specialists e.V. and therefore mainly from Germany.

Es erfolgt eine Direktverarbeitung der ersteigerten Haarzöpfe. Die Haarfarben und Haarlängen unterliegen somit natürlichen Variationen. Jede Perücke ist ein Unikat.

The auctioned hair braids are processed directly. The hair colours and hair lengths are therefore subject to natural variations. Every wig is unique.

RAPUNZEL-25
Dark-Blond



FERRARA-25
Light-Brown

FERRARA

●●●●●● < M [54-56 cm]

FRONT	SUPER-FRONT	
HAIR LENGTHS	FERRARA-15	15 cm
	FERRARA-25	25 cm
	FERRARA-33	33 cm
HAIR VOLUME	115-130% light-medium to medium	
HAIR QUALITY	EURO-REMY-HAIR	
CAP	FERRARA	

BROWN COLOURS

Medium-Brown (4/6)
Mocca-Mix (8/10/6-6)
Light-Brown (8/10)
Chocolate-Mix (8/10/27/20)

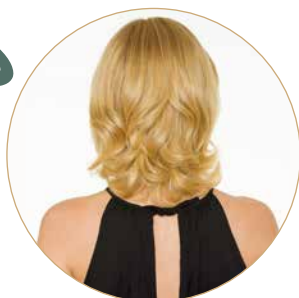
BLOND COLOURS

Medium-Blond-Mix (11/15/27)
Ash-Blond-Root (14/16/25+Root10)
Gold-Blond-Mix (19/23A)
Champagne-Mix (20/26)
Light-Blond (23A/25R)

RED COLOURS

Irish-Blond-Root (27R/28+Root27R)
Red-Mix (33/30/27R)

Ferrara



FERRARA-15
Gold-Blond-Mix



FERRARA-25
Light-Brown



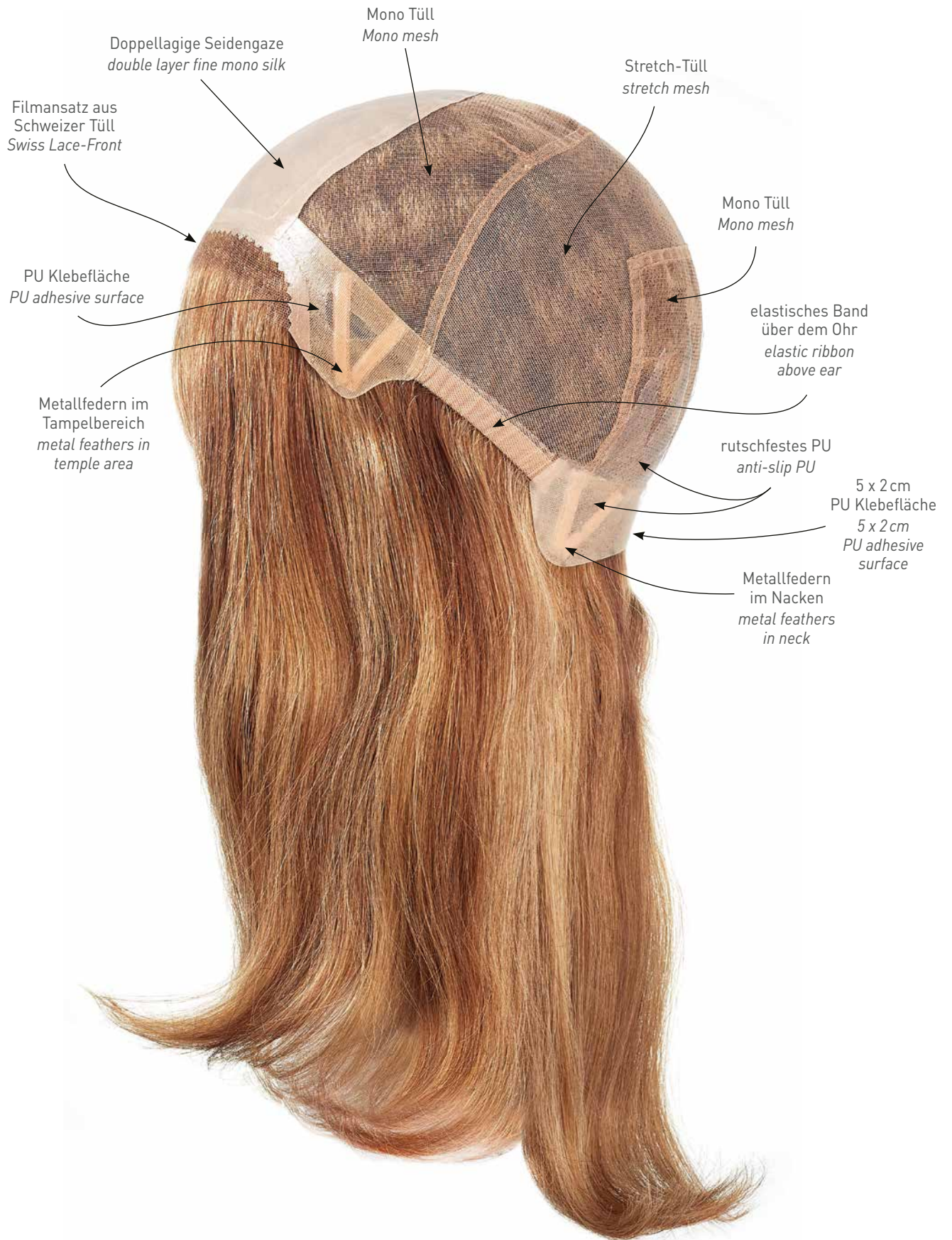
FERRARA-33
Medium-Blond-Mix

FERRARA-15
Gold-Blond-Mix



FERRARA-33
Medium-Blond-Mix





Ferrara

FERRARA-33
Medium-Blond-Mix

FERRARA

FERRARA Perücken sind aus EURO-REMY-HAAR – einem erstklassig präparierten Europäischen Echthaar. Das Haar wird schonend veredelt und maximal bis zu zwei Farbstufen verändert.

FERRARA wigs are made with EURO-REMY-HAIR – a first class processed European Human Hair. The hair is gently refined and the hair colour is changed up to a maximum of two grades.

HAARLÄNGEN HAIR LENGTHS

Ferrara - 15	15 - 17 cm
Ferrara - 25	25 - 27 cm
Ferrara - 33	33 - 35 cm

FERRARA-FARBRING

Farbring mit 11 Farben aus EURO-REMY-HAAR für Modelle Ferrara, Pisa und Ascona

FERRARA-COLOUR-RING

Colour ring with 11 colours made from EURO-REMY-HAIR for styles Ferrara, Pisa and Ascona

BROWN COLOURS



Medium-Brown
(4/6)



Mocca-Mix
(8/10/6-6)



Light-Brown
(8/10)



Chocolate-Mix
(8/10/27/20)

BLOND COLOURS



Medium-Blond-Mix
(11/15/27)



Ash-Blond-Root
(14/16/25+Root10)



Gold-Blond-Mix
(19/23A)



Champagne-Mix
(20/26)



Light-Blond
(23A/25R)

RED COLOURS



Irish-Blond-Root
(27R/28+Root27R)



Red-Mix
(33/30/27R)



RAPUNZEL-25
Dark-Blond

RAPUNZEL

●●●●●●●● < S/M (53-55cm)

FRONT	SUPER-FRONT	
HAIR LENGTHS	RAPUNZEL-15	15-19 cm
	RAPUNZEL-20	20-24 cm
	RAPUNZEL-25	25-29 cm
	RAPUNZEL-30	30-34 cm
	RAPUNZEL-35	35-39 cm
	RAPUNZEL-40	40-44 cm
HAIR VOLUME	100-115% light to light-medium	
HAIR QUALITY	EURO-RAW-CUT-HAIR	
CAP	ANASTASIA 2	

BROWN COLOURS

Dark-Brown (2/4)
Medium-Brown (4/6)
Medium-Light-Brown (6/8/30)
Light-Brown-Mix (8/10/30)

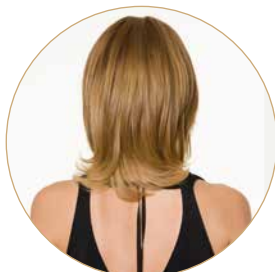
BLOND COLOURS

Dark-Blond (10/12)
Medium-Blond (11/12/15)
Medium-Blond-Mix (12/15/20)
Blond-Mix (15/20R/25)
Light-Blond-Mix (19/20R/25)
Light-Light-Blond (23A/25R/26)

Rapunzel



RAPUNZEL-15
Blond-Mix



RAPUNZEL-25
Dark-Blond



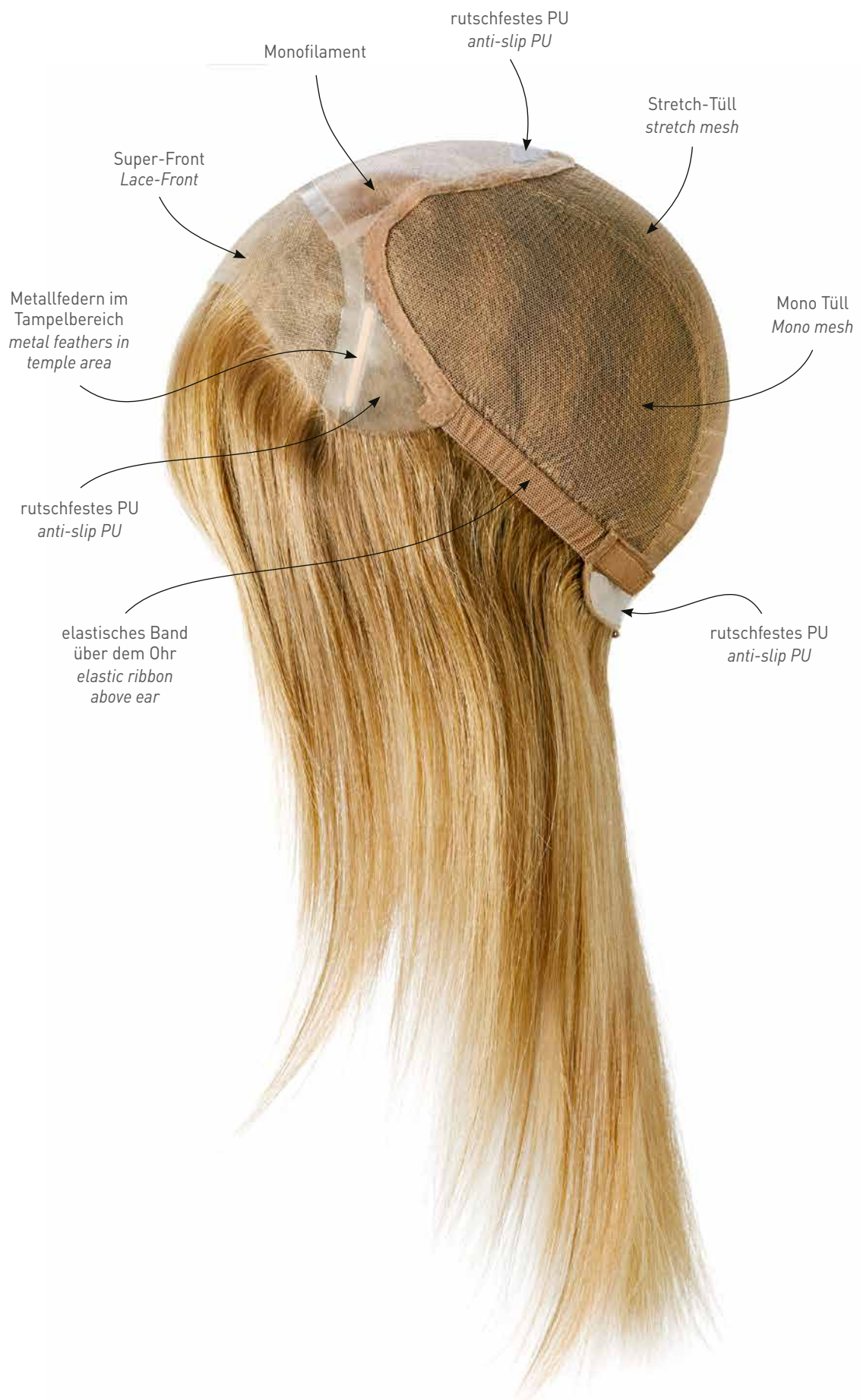
RAPUNZEL-40
Light-Brown-Mix

RAPUNZEL-15
Blond-Mix



RAPUNZEL-40
Light-Brown-Mix





Rapunzel

RAPUNZEL-20
Light-Blond-Mix

RAPUNZEL

RAPUNZEL Perücken sind aus EURO-ROH-SCHNITTHAAR – einem unbehandelten nicht präparierten Europäischen Echthaar (auch „Virgin-Hair“).

Die Charity-Aktion „RAPUNZEL“ des Bundesverbandes der Zweithaar-Spezialisten e.V. sammelt seit vielen Jahren Haarspenden, die für einen guten Zweck versteigert werden.

Das Haar der RAPUNZEL Perücken stammt aus diesen Versteigerungen. Das Haar wird nach Längen und Farben sortiert und ohne Farbänderungen verarbeitet. Jede Perücke ist ein Unikat! Die Farbbezeichnungen haben einen beschreibenden Charakter. Haarfarben, Haarlängen und Haarfall unterliegen natürlichen Variationen.

RAPUNZEL wigs are made with EURO-RAW-HAIR – an untreated and not processed European human hair (also named “Virgin-Hair”).

The charity campaign „Rapunzel“ is run by the German Association of Hair-Specialists e.V. since many years. Hair donations are collected and then auctioned for a good cause.

The hair of the RAPUNZEL wigs comes from these auctions. The hair is sorted by lengths and colours and used without colour changes. Every wig is unique! The colour names have a descriptive character. Hair colours, hair lengths and hair fall are subject to natural variations.

HAARLÄNGEN HAIR LENGTHS

Rapunzel - 15	15 - 19 cm
Rapunzel - 20	20 - 24 cm
Rapunzel - 25	25 - 29 cm
Rapunzel - 30	30 - 34 cm
Rapunzel - 35	35 - 39 cm
Rapunzel - 40	40 - 44 cm

FARBÜBERSICHT COLOUR CHART

RAPUNZEL ECHTHAAR

RAPUNZEL HUMAN HAIR

BROWN COLOURS



Dark-Brown
(2/4)



Medium-Brown
(4/6)



Medium-Light-Brown
(6/8/30)



Light-Brown-Mix
(8/10/30)

BLOND COLOURS



Dark-Blond
(10/12)



Medium-Blond
(11/12/15)



Medium-Blond-Mix
(12/15/20)



Blond-Mix
(15/20R/25)



Light-Blond-Mix
(19/20R/25)



Light-Light-Blond
(23A/25R/26)

A full-page photograph of a woman with long, wavy brown hair and blue eyes, wearing a white long-sleeved shirt and a white skirt. She is standing with her hands in her pockets, looking directly at the camera. The background is a plain, light color.

HAARTEILE *Echthaar*

HAARTEILE ECHTHAAR
 HAIR PIECES HUMAN HAIR
 POSTICHES EN CHEVEUX NATURELS
 PIEZAS DE CABELLO NATURAL
 POSTICCI IN CAPELLI NATURALI

Belle Madame®
Natural Hair Line



PARIS

SIZE 14x7cm
 HAIR LENGTH 30cm
 HAIR QUALITY ELEGANT-REMY-HAIR

Mittel-Mono-Scheitel mit 4 Clipsen, dünnem transparenten PU-Rand und Film-Ansatz
 Welded-Mono-Parting with 4 clips, thin transparent PU-edge and Lace-Front
 Raie en Monofilament moyen avec 4 clips, bordure en PU fin et transparent et bordure invisible devant
 Cubierta de monofilamento con 4 clips, delgados y transparentes bordes PU y bordados frontales
 Calotta mono media con 4 clip, bordo sottile e trasparente in PU e innesto su pellicola

BROWN COLOURS

Espresso (2)
 Dark-Mocca (4)
 Dark-Mocca-Mix (4/8)
 Brown-Red-Mix (6/30)
 Light-Brown (8)
 Medium-Ash-Blond (10/12)

BLOND COLOURS

Chocolate/Cream-Root (10/27/20R+Root8)
 Honey-Mix (12A/25R/28)
 Vanilla-Root (14/26+Root14)
 14/26
 20R
 Champagne-Root (20R/23+Root10)
 Swedish-Mix (23A/26)

RED COLOURS

Brown-Red-Mix (6/30)
 Dark-Auburn-Mix (33/30)
 Light-Copper-Mix (30/27)

** Enthält 5% hitzbeständiges Synthetikaar.
 Contains 5% heat-resistant synthetic hair.



PARIS LARGE

SIZE 16x10cm
 HAIR LENGTH 40cm
 HAIR QUALITY ELEGANT-REMY-HAIR

Mittel-Mono-Scheitel mit 4 Clipsen, dünnem transparenten PU-Rand und Film-Ansatz
 Welded-Mono-Parting with 4 clips, thin transparent PU-edge and Lace-Front
 Raie en Monofilament moyen avec 4 clips, bordure en PU fin et transparent et bordure invisible devant
 Cubierta de monofilamento con 4 clips, delgados y transparentes bordes PU y bordados frontales
 Calotta mono media con 4 clip, bordo sottile e trasparente in PU e innesto su pellicola

BROWN COLOURS

Espresso (2), Dark-Mocca (4)
 Dark-Mocca-Mix (4/8), Mocca-Mix (8/10/6-6)
 Brown-Red-Mix (6/30), Light-Brown (8)
 Chocolate (8/12/30)
 Chocolate-Mix (8/10/27/20)
 Medium-Ash-Blond (10/12)

BLOND COLOURS

Chocolate/Cream-Root (10/27/20R+Root8)
 Honey-Toast (12/15/25-12)
 Honey-Mix (12A/25R/28)
 Vanilla-Root (14/26+Root14)
 Danish-Blond-Root (20R/19+Root12)
 Champagne-Root (20R/23+Root10)
 Swedish-Mix (23A/26)

RED COLOURS

Brown-Red-Mix (6/30)
 Dark-Auburn-Mix (33/30)
 Light-Copper-Mix (30/27)

* Weißanteil aus hitzbeständigem Synthetik.
 White hair made of heat-resistant synthetic fibre.



ALMERIA RH

SIZE 15x13cm
 HAIR LENGTH 20-25cm
 HAIR QUALITY PREMIUM-REMY-HAIR-2

Flexibles, weiches Polyesternetz mit schmalen PU-Rand und 4 Clipsen
 Flexible, soft polyester net with narrow PU edge and 4 clips
 Filet en Polyèstre souple et doux avec bordure étroite en PU et 4 clips
 Red de poliéster flexible y suave con borde estrecho de PU y 4 clips
 Morbida rete flessibile in poliester e con sottile bordo in PU e 4 clips

BROWN COLOURS

Espresso (2), Dark-Mocca-Mix (4/8)
 Mocca-Mix (6/10-6), Chocolate (8/12/30)
 Chocolate-Mix (8/10/27/20)
 Medium-Ash-Blond (10/12)

BLOND COLOURS

Chocolate/Cream-Root (10/27/20R+Root8)
 Honey-Mix (12A/25R/28)
 Vanilla-Root (14/26+Root14)
 Danish-Blond-Root (20R/19+Root12)
 Champagne-Root (20R/23+Root10)
 Swedish-Blond-Root (23A/26+Root16)**

RED COLOURS

Dark-Cherry (4/133/32B)
 Terracotta-Gold (30/8/27R-8)
 Dark-Auburn-Mix (33/30)

GREY COLOURS

Brown-Grey (38/39)*
 Dark-Smoke-Grey (39/43+F56)*
 Smoke-Grey (43/56)*
 Light-Smoke-Grey (56/53)*
 Blond-Grey-Root (17/101+Root18)*

HAARTEILE *Echthaar*



NIZZA RH

SIZE	14x8cm
HAIR LENGTH	35cm
HAIR QUALITY	PREMIUM-REMY-HAIR-2

Fein-Mittel-Mono-Scheitel mit 4 Clipsen und Film-Ansatz

Fine-Welded-Mono-Parting with 4 clips and Lace-Front

Raie en Monofilament fin avec 4 clips et bordure invisible devant

Cubierta fina de monofilamento con 4 clips y bordados frontales

Calotta mono medio sottile con 4 clip e innesto su pellicola

BROWN COLOURS

Espresso (2)
Dark-Mocca-Mix (4/8)
Mocca-Mix (6/10-6)
Brown-Red-Mix (6/30)
Chocolate-Mix (8/10/27/20)
Medium-Ash-Blond (10/12)

BLOND COLOURS

Chocolate/Cream-Root (10/27/20R+Root8)
Honey-Mix (12A/25R/28)
Vanilla-Root (14/26+Root14)
Light-Blond-Mix (15/20/23+Root11)
Danish-Blond-Root (20R/19+Root12)
Champagne-Root (20R/23+Root10)
Swedish-Blond-Root (23A/26+Root16)**

RED COLOURS

Brown-Red-Mix (6/30)
Dark-Auburn-Mix (33/30)
Light-Copper-Mix (30/27)

GREY COLOURS

Dark-Smoke-Grey (39/43+F56)*
Smoke-Grey (43/56)*
Light-Smoke-Grey (56/53)*



NIZZA LARGE RH

SIZE	17x12cm
HAIR LENGTH	35cm
HAIR QUALITY	PREMIUM-REMY-HAIR-2

Fein-Mittel-Mono-Scheitel mit 4 Clipsen und Film-Ansatz

Fine-Welded-Mono-Parting with 4 clips and Lace-Front

Raie en Monofilament fin avec 4 clips et bordure invisible devant

Cubierta fina de monofilamento con 4 clips y bordados frontales

Calotta mono medio sottile con 4 clip e innesto su pellicola

BROWN COLOURS

Espresso (2), Dark-Mocca-Mix (4/8)
Mocca-Mix (6/10-6), Chocolate (8/12/30)
Chocolate-Mix (8/10/27/20)
Medium-Ash-Blond (10/12)

BLOND COLOURS

Chocolate/Cream-Root (10/27/20R+Root8)
Honey-Mix (12A/25R/28)
Vanilla-Root (14/26+Root14)
Light-Blond-Mix (15/20/23+Root11)
Danish-Blond-Root (20R/19+Root12)
Champagne-Root (20R/23+Root10)
Swedish-Blond-Root (23A/26+Root16)**

RED COLOURS

Dark-Cherry (4/133/32B)
Terracotta-Gold (30/8/27R-8)
Dark-Auburn-Mix (33/30)

GREY COLOURS

Brown-Grey (38/39)*
Dark-Smoke-Grey (39/43+F56)*
Smoke-Grey (43/56)*
Light-Smoke-Grey (56/53)*
Blond-Grey-Root (17/101+Root18)*



NIZZA EXTRA LARGE RH

SIZE	20x16cm
HAIR LENGTH	35cm
HAIR QUALITY	PREMIUM-REMY-HAIR-2

Fein-Mittel-Mono-Scheitel mit 4 Clipsen und Film-Ansatz

Fine-Welded-Mono-Parting with 4 clips and Lace-Front

Raie en Monofilament fin avec 4 clips et bordure invisible devant

Cubierta fina de monofilamento con 4 clips y bordados frontales

Calotta mono medio sottile con 4 clip e innesto su pellicola

BROWN COLOURS

Espresso (2)
Dark-Mocca-Mix (4/8)
Mocca-Mix (6/10-6)
Chocolate (8/12/30)
Chocolate-Mix (8/10/27/20)
Medium-Ash-Blond (10/12)

BLOND COLOURS

Chocolate/Cream-Root (10/27/20R+Root8)
Honey-Mix (12A/25R/28)
Vanilla-Root (14/26+Root14)
Light-Blond-Mix (15/20/23+Root11)
Champagne-Root (20R/23+Root10)
Swedish-Blond-Root (23A/26+Root16)**

RED COLOURS

Brown-Red-Mix (6/30)
Dark-Auburn-Mix (33/30)

** Enthält 5% hitzbeständiges Synthetikaar.
Contains 5% heat-resistant synthetic hair.

* Weißanteil aus hitzbeständigem Synthetik.
White hair made of heat-resistant synthetic fibre.



HAARTEILE ECHTHAAR
HAIR PIECES HUMAN HAIR



NIZZA LONG RH

SIZE	17x12cm
HAIR LENGTH	45cm
HAIR QUALITY	PREMIUM-REMY-HAIR-2

Fein-Mittel-Mono-Scheitel mit 4 Clipsen und Film-Ansatz

Fine-Welded-Mono-Parting with 4 clips and Lace-Front

Raie en Monofilament fin avec 4 clips et bordure invisible devant

Cubierta fina de monofilamento con 4 clips y bordados frontales

Calotta mono medio sottile con 4 clip e innesto su pellicola

BROWN COLOURS

- Espresso (2)
- Dark-Mocca-Mix (4/8)
- Mocca-Mix (6/10-6)
- Brown-Red-Mix (6/30)
- Chocolate (8/12/30)
- Chocolate-Mix (8/10/27/20)
- Medium-Ash-Blond (10/12)

BLOND COLOURS

- Chocolate/Cream-Root (10/27/20R+Root8)
- Honey-Mix (12A/25R/28)
- Vanilla-Root (14/26+Root14)
- Light-Blond-Mix (15/20/23+Root11)
- Champagne-Root (20R/23+Root10)
- Swedish-Blond-Root (23A/26+Root16)**

RED COLOURS

- Brown-Red-Mix (6/30)
- Dark-Auburn-Mix (33/30)





HAARTEILE ECHTHAAR
HAIR PIECES HUMAN HAIR

V-PART RH
Light-Blond-Mix

V-part





V-PART RH

SIZE	9-12x15,5cm
HAIR LENGTH	45cm
HAIR QUALITY	PREMIUM-REMY-HAIR-2

Mono-Haarteil mit 4 Clipsen und PU-Rand
Mono hair piece with 4 clips and PU edge
Postiche en Monofilament avec 4 clips et bordure en PU
Monofilamento postizo con 4 clips y borde de PU
Posticcio mono con 4 clip e bordo in PU

BROWN COLOURS

Espresso-Mix (2/4)
Dark-Mocca-Mix (4/8)
Mocca-Mix (6/10-6)
Chocolate (8/12/30)

BLOND COLOURS

Chocolate/Cream-Root (10/27/20R+Root8)
Light-Blond-Mix (15/20/23+Root11)
Champagne-Root (20R/23+Root10)
Swedish-Blond-Root (23A/26+Root16)**

RED COLOURS

Light-Copper-Mix (30/27)



LYON FT RH

SIZE	17x14cm
HAIR LENGTH	40cm
HAIR QUALITY	PREMIUM-REMY-HAIR-2

Fein-Mittel-Mono-Scheitel, doppellagig mit 4 Clipsen und Film-Ansatz
Fine-Welded-Mono-Parting, double-layered with 4 clips and Lace-Front
Raie en Monofilament fin, double couche avec 4 clips et bordure invisible devant
Cubierta fina de monofilamento, doble capa con 4 clips y bordados frontales
Calotta mono medio sottile, doppio strato con 4 clip e innesto su pellicola

BROWN COLOURS

Espresso (2), Dark-Mocca-Mix (4/8)
Mocca-Mix (6/10-6), Chocolate (8/12/30)
Chocolate-Mix (8/10/27/20)
Medium-Ash-Blond (10/12)

BLOND COLOURS

Chocolate/Cream-Root (10/27/20R+Root8)
Honey-Mix (12A/25R/28)
Vanilla-Root (14/26+Root14)
Light-Blond-Mix (15/20/23+Root11)
Champagne-Root (20R/23+Root10)
Swedish-Mix (23A/26)

RED COLOURS

Terracotta-Gold (30/8/27R-8)
Dark-Auburn-Mix (33/30)

GREY COLOURS

Dark-Smoke-Grey (39/43+F56)*
Smoke-Grey (43/56)*
Light-Smoke-Grey (56/53)*
Blond-Grey-Root (17/101+Root18)*



** Enthält 5% hitzbeständiges Synthetikaar.
Contains 5% heat-resistant synthetic hair.

* Weißanteil aus hitzbeständigem Synthetik.
White hair made of heat-resistant synthetic fibre.



POLY-LINE *Styles*

POLY-LINE-200



Belle Madame[®]
Natural Hair Line



POLY-LINE-100

SIZE	19x16cm
HAIR LENGTH	30cm
NET SIZE	6mm ²
HAIR QUALITY	ELEGANT-REMY-HAIR

Fein-Mono Haarteil mit Polyester-Netz,
3 Clipsen und PU-Ansatz

Fine-Mono hair piece with Polyester-Net,
3 clips and PU-Front

Postiche avec Monofilament fin et filet en
Polyèstre, 3 clips et PU devant

Pieza de cabello con monofilamento fino
y red de poliéster, 3 clips y PU frontal

Posticcio mono sottile con rete in
poliestere, 3 clip e innesto in PU

BROWN COLOURS

Espresso (2)
Dark-Mocca (4)
Dark-Mocca-Mix (4/8)
Brown-Red-Mix (6/30)
Light-Brown (8)
Medium-Ash-Blond (10/12)

BLOND COLOURS

Chocolate/Cream-Root (10/27/20R+Root8)
Honey-Mix (12A/25R/28)
Vanilla-Root (14/26+Root14)
20R
Danish-Blond-Root (20R/19+Root12)
Champagne-Root (20R/23+Root10)
Swedish-Mix (23A/26)

RED COLOURS

Brown-Red-Mix (6/30)
6/32B
Dark-Auburn-Mix (33/30)
30/27



POLY-LINE-200

SIZE	16x14cm
HAIR LENGTH	30cm
NET SIZE	6mm ²
HAIR QUALITY	ELEGANT-REMY-HAIR

Fein-Mono Haarteil mit Polyester-Netz,
4 Clipsen und PU-Ansatz

Fine-Mono hair piece with
Polyester-Net, 4 clips and PU-Front

Postiche avec Monofilament fin et filet
en Polyèstre, 4 clips et PU devant

Pieza de cabello en monofilamento fino
y red de poliéster, 4 clips y PU frontal

Posticcio mono sottile con rete in
poliestere, 4 clip e innesto in PU

BROWN COLOURS

Espresso (2), Dark-Mocca (4)
Dark-Mocca-Mix (4/8)
Brown-Red-Mix (6/30), Light-Brown (8)
Medium-Ash-Blond (10/12)

BLOND COLOURS

Chocolate/Cream-Root (10/27/20R+Root8)
11/15
Honey-Toast (12/15/25-12)
Honey-Mix (12A/25R/28)
14/26, 20R
Champagne-Root (20R/23+Root10)
Swedish-Mix (23A/26)

RED COLOURS

Brown-Red-Mix (6/30)
Dark-Auburn-Mix (33/30)
Light-Copper-Mix (30/27)

GREY COLOURS

38*, 44*, 45*



SOFT-LINE 3.5

SIZE	19x17cm
HAIR LENGTH	35cm
NET SIZE	3,5mm ²
HAIR QUALITY	ELEGANT-REMY-HAIR

Fein-Mono Haarteil mit weichem stabilen
Nylon-Netz, 4 Clipsen und Film/PU-Ansatz

Fine-Mono hair piece with soft stable
nylon-net, 4 clips and Lace/PU-Front

Postiche en Monofilament fin avec
doux filet de nylon résistant, 4 clips et
PU/bordure invisible devant

Pieza de cabello de monofilamento fino con
red de nylon blanda y estable con 4 clips,
bordados frontales y bordes PU

Posticcio mono sottile con morbida rete di
nylon stabile, 4 clip e innesto in PU/su pellicola

BROWN COLOURS

Espresso (2), Dark-Mocca (4)
Dark-Mocca-Mix (4/8)
Brown-Red-Mix (6/30)
Light-Brown (8)
Medium-Ash-Blond (10/12)

BLOND COLOURS

Chocolate/Cream-Root (10/27/20R+Root8)
Honey-Mix (12A/25R/28)
14/26, 20R
Champagne-Root (20R/23+Root10)
Swedish-Mix (23A/26)

RED COLOURS

Brown-Red-Mix (6/30)
Dark-Auburn-Mix (33/30)
Light-Copper-Mix (30/27)



NYLON-LINE-75

SIZE	16x12cm
HAIR LENGTH	30cm
NET SIZE	5mm ²
HAIR QUALITY	INDIAN-CHINESE-MIX-HAIR

Feines Nylon Netz Haarteil mit 4 Clipsen

Fine nylon-net hair piece with 4 clips

Postiche avec filet fin en nylon et avec 4 clips

Pieza de cabello con red fina de nylon y 4 clips

Posticcio con rete sottile in nylon con 4 clip

BROWN COLOURS

- Espresso (2)
- Dark-Mocca (4)
- Dark-Mocca-Mix (4/8)
- Mocca-Mix (8/10-6-6)
- Brown-Red-Mix (6/30)
- Chocolate (8/12/30)
- Chocolate-Mix (8/10/27/20)
- Medium-Ash-Blond (10/12)

BLOND COLOURS

- Chocolate/Cream-Root (10/27/20R+Root8)
- Honey-Mix (12A/25R/28) 14/26
- Champagne-Root (20R/23+Root10)
- Swedish-Mix (23A/26)

RED COLOURS

- Brown-Red-Mix (6/30)
- Dark-Auburn-Mix (33/30)



NYLON-LINE-150

SIZE	19x16cm
HAIR LENGTH	30cm
NET SIZE	5mm ²
HAIR QUALITY	INDIAN-CHINESE-MIX-HAIR

Fein-Mono Haarteil mit Nylon-Netz, 4 Clipsen und Lace-Front

Fine-Mono hair piece with nylon-net, 4 clips and lace-front

Postiche avec Monofilament fin et filet en nylon, 4 clips et bordure invisible devant

Pieza de cabello en monofilamento fino red y de nylon, 4 clips y bordados frontales

Posticcio mono sottile con rete in nylon, 4 clip e innesto su pellicola

BROWN COLOURS

- Espresso (2), Dark-Mocca (4)
- Dark-Mocca-Mix (4/8), Mocca-Mix (8/10/6-6)
- Brown-Red-Mix (6/30)
- Chocolate (8/12/30)
- Chocolate-Mix (8/10/27/20)
- Medium-Ash-Blond (10/12)

BLOND COLOURS

- Chocolate/Cream-Root (10/27/20R+Root8)
- Honey-Mix (12A/25R/28) 14/26
- Champagne-Root (20R/23+Root10)
- Swedish-Mix (23A/26)

RED COLOURS

- Brown-Red-Mix (6/30)
- Dark-Auburn-Mix (33/30)

GREY COLOURS

- 39-38*, 45-36*



NYLON-LINE-250

SIZE	20x20cm
HAIR LENGTH	30cm
NET SIZE	5mm ²
HAIR QUALITY	INDIAN-CHINESE-MIX-HAIR

Fein-Mono Haarteil mit Nylon-Netz,
4 Clipsen und Lace-Front

Fine-Mono hair piece with nylon-net,
4 clips and lace-front

Postiche avec Monofilament fin et filet en
nylon, 4 clips et bordure invisible devant

Pieza de cabello en monofilamento fino red
y de nylon, 4 clips y bordados frontales

Posticcio mono sottile con rete in nylon,
4 clip e innesto su pellicola

BROWN COLOURS

Dark-Mocca (4)
Mocca-Mix (8/10/6-6)
Chocolate-Mix (8/10/27/20)

BLOND COLOURS

Chocolate/Cream-Root (10/27/20R+Root8)
Honey-Mix (12A/25R/28)
Swedish-Mix (23A/26)

RED COLOURS

Dark-Auburn-Mix (33/30)



NYLON-LINE-300

SIZE	19x16cm
HAIR LENGTH	30cm
NET SIZE	5mm ²
HAIR QUALITY	INDIAN-CHINESE-MIX-HAIR

Nylon-Netz Haarteil
mit 4 Clipsen

Nylon-net hair piece
with 4 clips

Postiche avec filet en nylon
et avec 4 clips

Pieza de cabello con red de nylon
y 4 clips

Posticcio con rete in nylon
con 4 clip

BROWN COLOURS

Espresso (2)
Dark-Mocca (4)
Dark-Mocca-Mix (4/8)
Mocca-Mix (8/10/6-6)
Brown-Red-Mix (6/30)
Chocolate (8/12/30)
Chocolate-Mix (8/10/27/20)
Medium-Ash-Blond (10/12)

BLOND COLOURS

Chocolate/Cream-Root (10/27/20R+Root8)
Honey-Mix (12A/25R/28)
14/26
Champagne-Root (20R/23+Root10)
Swedish-Mix (23A/26)

RED COLOURS

Brown-Red-Mix (6/30)
Dark-Auburn-Mix (33/30)

Nylon-Line

HAARTEILE ECHTHAAR
HAIR PIECES HUMAN HAIR



BARCELONA RH
Chocolate-Mix

Barcelona



BARCELONA LARGE RH

FRONT	SUPER-FRONT
SIZE	28x24 cm
HAIR LENGTH	23 - 28 cm
HAIR QUALITY	PREMIUM-REMY-HAIR-2

Halbperücke: Monofilament + handgeknüpft mit 4 Clipsen und Super-Front

Half-wig: Monofilament + hand-tied with 4 clips and Super-Front

Demi-Perruque: Monofilament + implanté main avec 4 clips et Super-Front

Media-Peluca: Monofilamento + anudada a mano con 4 clips y Super-Front

Mezza-Parrucche: Monofilamento + annodata a mano con 4 clip e Super-Front

BROWN COLOURS

Espresso (2), Dark-Mocca-Mix (4/8)

Mocca-Mix (6/10-6)

Brown-Red-Mix (6/30)

Chocolate (8/12/30)

Chocolate-Mix (8/10/27/20)

Medium-Ash-Blond (10/12)

BLOND COLOURS

Chocolate/Cream-Root (10/27/20R+Root8)

Honey-Mix (12A/25R/28)

Light-Blond-Mix (15/20/23+Root11)

Vanilla-Mix-Root (20/12A/23A+Root10/12A)

Swedish-Blond-Root (23A/26+Root16)**

RED COLOURS

Brown-Red-Mix (6/30)

Dark-Auburn-Mix (33/30)

GREY COLOURS

Dark-Smoke-Grey (39/43+F56)*

Smoke-Grey (43/56)*

Light-Smoke-Grey (56/53)*

Blond-Grey-Root (17/101+Root18)*



BARCELONA RH

FRONT	SUPER-FRONT
SIZE	22x22cm
HAIR LENGTH	18-23cm
HAIR QUALITY	PREMIUM-REMY-HAIR-2

Halbperücke: Monofilament + handgeknüpft mit 4 Clipsen und Super-Front

Half-wig: Monofilament + hand-tied with 4 clips and Super-Front

Demi-Perruque: Monofilament + implanté main avec 4 clips et Super-Front

Media-Peluca: Monofilamento + anudada a mano con 4 clips y Super-Front

Mezza-Parrucche: Monofilamento + annodata a mano con 4 clip e Super-Front

BROWN COLOURS

- Espresso (2)
- Dark-Mocca (4)
- Dark-Mocca-Mix (4/8)
- Mocca-Mix (6/10-6)
- Chocolate (8/12/30)
- Chocolate-Mix (8/10/27/20)
- Medium-Ash-Blond (10/12)

BLOND COLOURS

- Caramel-Root (12/27/22H+Root10)
- Honey-Toast (12/15/25-12)
- Light-Blond-Mix (15/20/23+Root11)
- Vanilla-Mix-Root (20/12A/23A+Root10/12A)
- Swedish-Blond-Root (23A/26+Root16)**

RED COLOURS

- Terracotta-Gold (30/8/27R-8)
- Dark-Auburn-Mix (33/30)

GREY COLOURS

- Dark-Smoke-Grey (39/43+F56)*
- Smoke-Grey (43/56)*
- Light-Smoke-Grey (56/53)*



BARCELONA LONG RH

FRONT	SUPER-FRONT
SIZE	22x22cm
HAIR LENGTH	35-40cm
HAIR QUALITY	PREMIUM-REMY-HAIR-2

Halbperücke: Monofilament + handgeknüpft mit 4 Clipsen und Super-Front

Half-wig: Monofilament + hand-tied with 4 clips and Super-Front

Demi-Perruque: Monofilament + implanté main avec 4 clips et Super-Front

Media-Peluca: Monofilamento + anudada a mano con 4 clips y Super-Front

Mezza-Parrucche: Monofilamento + annodata a mano con 4 clip e Super-Front

BROWN COLOURS

- Espresso (2)
- Dark-Mocca-Mix (4/8)
- Mocca-Mix (6/10-6)
- Chocolate (8/12/30)
- Chocolate-Mix (8/10/27/20)
- Medium-Ash-Blond (10/12)

BLOND COLOURS

- Caramel-Root (12/27/22H+Root10)
- Honey-Toast (12/15/25-12)
- Light-Blond-Mix (15/20/23+Root11)
- Champagne-Root (20R/23+Root10)
- Swedish-Mix (23A/26)

RED COLOURS

- Terracotta-Gold (30/8/27R-8)
- Dark-Auburn-Mix (33/30)

* Weißanteil aus hitzebeständigem Synthetik.
White hair made of heat-resistant synthetic fibre.

** Enthält 5% hitzebeständiges Synthetikhaar.
Contains 5% heat-resistant synthetic hair.



VALENCIA RH

SIZE	18x18cm
HAIR LENGTH	25cm
HAIR QUALITY	PREMIUM-REMY-HAIR-2

Fein-Mono Haarteil mit 4 Clipsen, PU-Ringen zum Zuschneiden und Film-Ansatz

Fine-Mono hair piece with 4 clips, PU-rings for base cutting and Lace-Front

Postiche en Monofilament fin avec 4 clips, des anneaux de PU pour découper et de la bordure invisible devant

Pieza de cabello en monofilamento fino con 4 clips, anillo PU para el corte de base y bordados frontales

Posticcio mono sottile con 4 clip, anelli in PU da tagliare e innesto su pellicola

BROWN COLOURS

- Espresso (2), Dark-Mocca-Mix (4/8)
- Brown-Red-Mix (6/30), Light-Brown (8)
- Medium-Ash-Blond (10/12)

BLOND COLOURS

- Chocolate/Cream-Root (10/27/20R+Root8)
- Honey-Toast (12/15/25-12)
- Honey-Mix (12A/25R/28)
- Vanilla-Root (14/26+Root14)
- Danish-Blond (19/20R)
- Champagne-Root (20R/23+Root10)
- Swedish-Mix (23A/26)

RED COLOURS

- Brown-Red-Mix (6/30)
- Dark-Auburn-Mix (33/30)
- Light-Copper-Mix (30/27)

GREY COLOURS

45*



MALAGA RH
Danish-Blond-Root

Malaga



MALAGA RH

SIZE	17x16cm
HAIR LENGTH	35cm
HAIR QUALITY	PREMIUM-REMY-HAIR-2

Mono-Haarteil mit 4 Clipsen, Film-Ansatz im Stirnbereich, Mono-Scheitel und Tressen von Tempel-zu-Tempel

Mono hair piece with 4 clips, Lace-Front, Mono-Parting and wefts from temple-to-temple

Postiche en Monofilament avec 4 clips, Bordure invisible devant, mono-sommet et des bandes de tempe à tempe

Monofilamento postizo con 4 clips, Película invisible en la zona de la frente, mono-partidura y tejido de sien a sien

Posticcio mono con 4 clip, Lavorazione a innesto su pellicola nella zona frontale, mono-riga e fasce da tempia a tempia

BROWN COLOURS

Espresso (2), Dark-Mocca (4)
Dark-Mocca-Mix (4/8), Mocca-Mix (6/10-6)
Chocolate (8/12/30), Chocolate-Mix (8/10/27/20)
Medium-Ash-Blond (10/12)

BLOND COLOURS

Caramel-Root (12/27/22H+Root10)
Honey-Toast (12/15/25-12)
Danish-Blond-Root (20R/19+Root12)
Vanilla-Mix-Root (20/12A/23A+Root10/12A)
Champagne-Root (20R/23+Root10)
Swedish-Blond-Root (23A/26+Root16)**

RED COLOURS

Terracotta-Gold (30/8/27R-8)
Dark-Auburn-Mix (33/30)





GRANADA RH

SIZE	17,5x17cm
HAIR LENGTH	11,5-15cm
HAIR QUALITY	PREMIUM-REMY-HAIR-2

Mono Haarteil mit 4 Clipsen, PU-Ansatz und Tressen von Tempel-zu-Tempel

Mono hair piece with 4 clips, PU-Front and wefts from temple-to-temple

Postiche en Monofilament avec 4 clips, PU devant et des bandes de tempe à tempe

Pieza de cabello en monofilamento con 4 clips, PU frontal y tramas de sien a sien

Posticcio mono con 4 clip, innesto in PU e fasce da tempia a tempia

BROWN COLOURS

Espresso (2), Dark-Mocca-Mix (4/8)
Brown-Red-Mix (6/30), Light-Brown (8)
Medium-Ash-Blond (10/12)

BLOND COLOURS

Chocolate/Cream-Root (10/27/20R+Root8)
Honey-Mix (12A/25R/28)
Vanilla-Root (14/26+Root14)
Cognac-Root (15/20R/25+Root12)
Danish-Blond (19/20R)
Champagne-Root (20R/23+Root10)
Swedish-Mix (23A/26)

RED COLOURS

Brown-Red-Mix (6/30)
Dark-Auburn-Mix (33/30)
Light-Copper-Mix (30/27)

GREY COLOURS

Dark-Smoke-Grey (39/43+F56)*
45*
Light-Smoke-Grey (56/53)*



GRANADA LONG RH
Terracotta-Gold



GRANADA LONG RH

SIZE	17,5x17cm
HAIR LENGTH	16,5-40cm
HAIR QUALITY	PREMIUM-REMY-HAIR-2

Mono Haarteil mit 4 Clipsen, PU/Film-Ansatz und Tressen von Tempel-zu-Tempel

Mono hair piece with 4 clips, PU/Lace-Front and wefts from temple-to-temple

Postiche en Monofilament avec 4 clips, PU/bordure invisible devant et des bandes de tempe à tempe

Pieza de cabello en monofilamento con 4 clips, PU/bordados frontales y tramas de sien a sien

Posticcio mono con 4 clip, innesto in PU/su pellicola e fasce da tempia a tempia

BROWN COLOURS

Espresso (2), Dark-Mocca-Mix (4/8), Mocca-Mix (6/10-6)
Brown-Red-Mix (6/30), Chocolate-Mix (8/10/27/20)
Medium-Ash-Blond (10/12)

BLOND COLOURS

Chocolate/Cream-Root (10/27/20R+Root8)
Honey-Mix (12A/25R/28)
Light-Blond-Mix (15/20/23+Root11)
Danish-Blond-Root (20R/19+Root12)
Vanilla-Mix-Root (20/12A/23A+Root10/12A)
Champagne-Root (20R/23+Root10)
Swedish-Blond-Root (23A/26+Root16)**

RED COLOURS

Brown-Red-Mix (6/30)
Terracotta-Gold (30/8/27R)
Dark-Auburn-Mix (33/30)

GREY COLOURS

Dark-Smoke-Grey (39/43+F56)*
Smoke-Grey (43/56)*
Light-Smoke-Grey (56/53)*

* Weißanteil aus hitzebeständigem Synthetik.
White hair made of heat-resistant synthetic fibre.



PISA

SIZE	19x16cm
HAIR LENGTH	30cm
HAIR VOLUME	115%
HAIR QUALITY	light-medium EURO-REMY-HAIR

Haarteil aus EURO-REMY-HAAR
– einem erstklassig präparierten
Europäischen Echthaar.
Das Eurohaar wird schonend veredelt und
maximal bis zu zwei Farbstufen verändert
Haarteil aus feinem Mittel-Mono mit 4 Clipsen,
PU-Ansatz und Tressen am Hinterkopf

Hair piece with EURO-REMY-HAIR
– a first class processed European Hair.
The Eurohair is gently refined and the
hair colour is changed up to maximum
two grades

Hair piece with fine Welded-Mono, 4 clips,
PU-Front and wefts in back

FERRARA-FARBRING / COLOUR-RING

BROWN COLOURS

Medium-Brown (4/6)
Mocca-Mix (8/10/6-6)
Light-Brown (8/10)
Chocolate-Mix (8/10/27/20)

BLOND COLOURS

Medium-Blond-Mix (11/15/27)
Gold-Blond-Mix (19/23A)
Champagne-Mix (20/26)
Light-Blond (23A/25R)

RED COLOURS

Red-Mix (33/30/27R)



ASCONA

SIZE	20x17,5cm
HAIR LENGTH	30cm
HAIR VOLUME	130 - 150%
HAIR QUALITY	medium to medium-heavy EURO-REMY-HAIR

Haarteil aus EURO-REMY-HAAR
– einem erstklassig präparierten
Europäischen Echthaar.
Das Eurohaar wird schonend veredelt und
maximal bis zu zwei Farbstufen verändert
Tressen in Kreisen auf Nylon-Netz genäht
mit 3 Clipsen, PU-Ansatz und Mono-Scheitel

Hair piece with EURO-REMY-HAIR
– a first class processed European Hair.
The Eurohair is gently refined and the
hair colour is changed up to maximum
two grades

Wefts sewn in circles on nylon-net
with 3 clips, PU-front and mono-parting

FERRARA-FARBRING / COLOUR-RING

BROWN COLOURS

Medium-Brown (4/6)
Mocca-Mix (8/10/6-6)
Light-Brown (8/10)
Chocolate-Mix (8/10/27/20)

BLOND COLOURS

Medium-Blond-Mix (11/15/27)
Gold-Blond-Mix (19/23A)
Champagne-Mix (20/26)
Light-Blond (23A/25R)

RED COLOURS

Red-Mix (33/30/27R)



MILANO

SIZE	19x17cm
HAIR LENGTH	30cm
NET SIZE	7mm ²

HAIR QUALITY INDIAN-CHINESE-MIX-HAIR

Fein-Mono Scheitel mit PU-Ansatz und Waben-
Bändermontur aus Polyester-Mono mit 4 Clipsen
Fine-Mono Parting with PU-Front and honey-comb
ribbon cap made of polyester-mono with 4 clips

Raie en Monofilament fin avec PU devant et
bonnet de rubans en nid d'abeilles
de polyester-monofilament avec 4 clips

Monofilamento fino en la coronilla con PU frontal
y cintas-panal de abeja de poliéster-monofilamento,
cinta en montura con 4 clips

Calotta mono sottile con innesto in PU e cinte
a nido d'ape in poliester-mono con 4 clip

BROWN COLOURS

Espresso (2), Dark-Mocca (4)
Dark-Mocca-Mix (4/8) Mocca-Mix (8/10/6-6)
Brown-Red-Mix (6/30), Light-Brown (8)
Chocolate (8/12/30)
Chocolate-Mix (8/10/27/20)
Medium-Ash-Blond (10/12)

BLOND COLOURS

Chocolate/Cream-Root (10/27/20R+Root8)
Honey-Toast (12/15/25-12)
Vanilla-Root (14/26+Root14)
Danish-Blond-Root (20R/19+Root12)
Champagne-Root (20R/23+Root10)
Swedish-Mix (23A/26)

RED COLOURS

Brown-Red-Mix (6/30)
Dark-Auburn-Mix (33/30)
Light-Copper-Mix (30/27)



MONACO

SIZE	19x16cm
HAIR LENGTH	40cm
NET SIZE	10mm ²
HAIR QUALITY	INDO-HAIR

Fein-Mono Haarteil mit Waben-Bändern,
4 Clipsen und PU-Ansatz

Fine-Mono hair piece with honeycomb
ribbons, 4 clips and PU-Front

Postiche en Monofilament fin avec rubans
en nid d'abeilles, 4 clips et PU devant

Pieza de cabello de monofilamento fino con
cintas-panal de abejas, 4 clips y PU frontal

Posticcio mono sottile con nastri a
nido d'ape, 4 clip e innesto in PU

BROWN COLOURS

1-B
Dark-Mocca (4)
Brown-Red-Mix (6/30)
Light-Brown (8)
10

BLOND COLOURS

Chocolate/Cream-Root (10/27/20R+Root8)
12
Honey-Mix (12A/25R/28)
Vanilla-Root (14/26+Root14)
14/26, 18/22, 20
Swedish-Mix (23A/26)
26

RED COLOURS

Brown-Red-Mix (6/30)
33, 33/32B, 33/27R

GREY COLOURS

36*



CONSTANCE

SIZE	16x14cm
HAIR LENGTH	50cm
HAIR QUALITY	INDO-HAIR

Halbperücke.
Tressen auf Tüll

Half-wig.
Wefts onto mesh

Demi-perruque.
Bandes en tulle

Media peluca.
Tramas en tul

Semiparrucca.
Fasce su tulle

BROWN COLOURS

1-B
Dark-Mocca (4)
6
Light-Brown (8)
10

BLOND COLOURS

12
16
18/22
20
Swedish-Mix (23A/26)
26

RED COLOURS

33

GREY COLOURS

36*



BORDEAUX

SIZE	17x16cm
HAIR LENGTH	25cm
NET SIZE	10mm ²
HAIR QUALITY	INDO-HAIR

Fein-Mono Haarteil mit Waben-Bändern,
4 Clipsen und PU-Ansatz

Fine-Mono hair piece with honeycomb
ribbons, 4 clips and PU-Front

Postiche en Monofilament fin avec rubans
en nid d'abeilles, 4 clips et PU devant

Pieza de cabello de monofilamento fino con
cintas-panal de abejas, 4 clips y PU frontal

Posticcio mono sottile con nastri a
nido d'ape, 4 clip e innesto in PU

BROWN COLOURS

1-B, Dark-Mocca (4)
6, Light-Brown (8)
10

BLOND COLOURS

Chocolate/Cream-Root (10/27/20R+Root8)
12
Honey-Mix (12A/25R/28)
14
Vanilla-Root (14/26+Root14)
18/22, 20, 22
Swedish-Mix (23A/26)
26

RED COLOURS

33

GREY COLOURS

36*, 38*, 39*, 43*, 45*, 51*

FRONTALIS RH

HAARTEIL FÜR FRONTALE FIBROSIERENDE ALOPEZIE

Frontalis RH ist die Lösung bei Haarverlust im Stirnbereich. Das Haarteil lässt sich leicht aufsetzen, ist sehr angenehm zu tragen und hat einen sicheren Halt. Mit seinem natürlichen Ansatz (Super-Front) fügt sich das Haarteil perfekt ins eigene Haar ein – die Verbindung ist dank der ausgeklügelten Befestigung nahtlos. Es ist einfach zuzuschneiden, individuell anpassbar und sehr einfach zu stylen!

FRONTALIS

Light-Blond-Mix

HAIR PIECE FOR FRONTAL FIBROSING ALOPECIA

Frontalis RH is the solution for hair loss in the forehead area. The hair piece can be easily put on, it is very comfortable to wear and has a secure hold. With its very natural front (Super-Front), the hair piece blends in perfectly with own hair – the connection is seamless thanks to the sophisticated attachment. It is easy to cut, customisable and very easy to style!



FRONTALIS RH

Ansatz aus 4 cm SUPER-FRONT und 3 cm rutschfestem weichen Silikon-PU zum Zuschneiden, Tempeln aus Silikon-PU, Nacken aus Samt mit Silikon-PU-Aufnäher, Größe mit Klettband verstellbar

Front made of 4 cm SUPER-FRONT and 3 cm non-slip soft silicone PU to be cut to size, temples made of silicone PU, neck made of velvet with silicone PU patch, size adjustable with velcro

Bordure avant en tulle SUPER-FRONT de 4 cm et 3 cm de PU-silicone souple et antiglisse, peut être découpé pour ajuster, tempes en PU-silicone, nuque en tissus velours avec patch en PU-Silicone, taille réglable par élastiques et velcro

Bordado frontale de 4 cm de SUPER-FRONT y 3 cm de PU de silicona suave antideslizante para cortar a medida, almohadillas de PU de silicona, cuello de terciopelo con parche de PU de silicona, talla ajustable con velcro

Innesto di 4 cm SUPER-FRONT e 3 cm di morbido silicone PU antiscivolo da tagliare a misura, imbottiture in silicone PU, collo in velluto con patch in silicone PU, taglia regolabile con velcro

1



2



3



FRONTALIS RH

FRONT	SUPER-FRONT
HAIR LENGTH	23-28cm
HAIR QUALITY	PREMIUM-REMY-HAIR-2

BROWN COLOURS

Espresso (2)
Dark-Mocca-Mix (4/8)
Mocca-Mix (6/10-6)
Chocolate-Mix (8/10/27/20)
Medium-Ash-Blond (10/12)

BLOND COLOURS

Chocolate/Cream-Root (10/27/20R+Root8)
Honey-Mix (12A/25R/28)
Light-Blond-Mix (15/20/23+Root11)
Champagne-Root (20R/23+Root10)
Swedish-Blond-Root (23A/26+Root16)**

RED COLOURS

Dark-Auburn-Mix (33/30)

GREY COLOURS

Brown-Grey (38/39)*
Dark-Smoke-Grey (39/43+F56)*
Smoke-Grey (43/56-39)*
Light-Smoke-Grey (56/53-39)*
Blond-Grey-Root (17/101+Root18)*

* Weißanteil aus hitzebeständigem Synthetik.
White hair made of heat-resistant synthetic fibre.

** Enthält 5% hitzebeständiges Synthetikhaar.
Contains 5% heat-resistant synthetic hair.

EXTENSIONS

Echthaar

Human Hair

HAARVERLÄNGERUNGEN ECHTHAAR

BELLE MADAME EXTENSIONS sind Haarverlängerungen aus hochwertigem indischen Remy-Haar. Vier verschiedene Methoden in unterschiedlichen Haarlängen bieten vielfältige Lösungen. Die Systeme sind in 15 gängigen Echthaarfarben erhältlich und lassen sich gut untereinander kombinieren und mit Perücken und Haarteilen verarbeiten.

VOLUME-WEFT ist eine zweifach gelegte und vernähte Haartresse zum individuellen Arbeiten. Erhältlich in 40 cm Haarlänge.

CLIP-IN-HAIR ist ein Haartressen-Set mit Clipsen. 2 Tressen sind auf Tüll untereinander vernäht. Zum individuellen Arbeiten oder für temporäre Nutzung durch die Kundin. Erhältlich in 45 cm Haarlänge.

KERATIN-BOND sind Haarsträhnen mit Keratin-Bondings. Die Bondings werden im Studio mit Wärme aufgeweicht und ins Eigenhaar modelliert. Die Flat-Tip-Form ermöglicht zügiges Arbeiten und ist leicht teilbar für feine Strähnentechnik. Erhältlich in 50 cm Haarlänge.

TAPE-IN sind Haarsträhnen in einem PU-Träger mit Klebestreifen. TAPE-IN Extensions zeichnen sich durch ihre einfache Handhabung aus. Das Eigenhaar wird zwischen zwei TAPE-EXTENSIONS ohne zusätzliche Wärme geklebt. Zudem ist der Klebestreifen austauschbar, wodurch die Strähnen mehrfach verwendet werden können.

15 Farbtöne sind sofort ab Lager lieferbar.

HAIR EXTENSIONS HUMAN HAIR

BELLE MADAME EXTENSIONS are hair extensions made of high-quality Indian Remy hair. Four different methods in different hair lengths offer a variety of solutions. The systems are available in 15 popular human hair colours and can be easily combined with each other and with wigs and hair pieces.

VOLUME-WEFT is a double layered and sewn hair weft for individual work. Available in 40 cm hair length.

CLIP-IN-HAIR is a hair weft set with clips. 2 wefts are sewn on thin mesh. For individual work or for temporary use by the customer. Available in 45 cm hair length.

KERATIN-BOND are hair strands with Keratin-bondings. The bondings are softened with heat in the studio and modelled into the client's own hair. The flat-tip shape allows for quick work and is easily separable for fine stranding techniques. Available in 50 cm hair length.

TAPE-IN are hair strands in a PU carrier with adhesive strips. TAPE-IN extensions are characterised by their easy handling. The human hair is glued between two TAPE-EXTENSIONS without additional heat. In addition, the adhesive strip is replaceable, which means that the strands can be used several times.

15 colour shades are available directly ex stock.

FARBKARTE EXTENSIONS COLOUR CHART EXTENSIONS

BROWN COLOURS



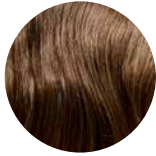
Espresso
(2)



Dark-Mocca
(4)



Light-Brown
(8)



Medium-Ash-Blond
(10/12)

BLOND COLOURS



Chocolate/Cream-Root
(10/27/20R+Root8)



Medium-Blond
(12A)



Honey-Mix
(12A/25R/28)



Ash-Blond (15)



Blond-Mix
(20/25R)



Champagne-Root
(20R/23+Root10)



Swedish-Blond-Root
(23A/26+Root16)



Swedish-Mix
(23A/26)

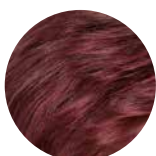


Platinum-Blond
(26+Platinum)

RED COLOURS



Dark-Auburn-Mix
(33/30)



Bordeaux-Red
(133)



VOLUME-WEFT RH 40 CM

Haartresse,
2-fach gelegt und vernäht,
40cm Haarlänge.
1 Meter breit, 100g / Stück,
1 Stk. / Packung
= 100g je Packung.

Farben ↻ Farbkarte links

Hair weft,
double layered and sewn,
40cm hair length.
1 metre wide, 100g / piece,
1 pc. / pack
= 100g per pack.

Colours ↻ Colour Chart on the left

Art. 6134



CLIP-IN-HAIR 45 CM

Haartressen-Set mit Clipsen,
2 Tressen auf dünnem Tüll vernäht,
45cm Haarlänge.
Set aus 1x20cm, 1x18cm,
2x15cm, 2x10cm und 2x4cm
= 96cm / 100g je Packung

Farben ↻ Farbkarte links

Hair weft set with clips,
two wefts sewn on thin mesh,
45cm hair length.
Set with 1x20cm, 1x18cm,
2x15cm, 2x10cm und 2x4cm
= 96cm / 100g per pack.

Colours ↻ Colour Chart on the left

Art. 6145



ZUBEHÖR
ACCESSORIES

KERATIN-EXTENSIONS

EXTENSIONS MASCHINE #1
Art. Nr. 6003



EXTENSIONS MASCHINE #1
für Keratin-Extensions
EXTENSIONS MACHINE #1
for Keratin-Extensions
Art. Nr. 6003

MONTIER-ZANGE
Art. Nr. 6005



MONTIER-ZANGE
für Keratin-Extensions
ASSEMBLY PLIERS
for Keratin-Extensions
Art. Nr. 6005

REMOVER-ZANGE
Art. Nr. 6006



REMOVER-ZANGE
für Keratin-Extensions
REMOVER PLIERS
for Keratin-Extensions
Art. Nr. 6006

ENTFERNER-LÖSUNG
für Keratin-Extensions
REMOVER-SOLVENT
for Keratin-Extensions
Art. Nr. 6016

KERATIN-BONDING
24 Stück
schwarz, braun, beige, transparent
KERATIN-BONDING
24 pieces
black, brown, beige, transparent
Art. Nr. 6017



BÜRSTE / BRUSH
Art. Nr. 6015

TAPE-EXTENSIONS

EXTENSIONS-TAPE-WHITE
Art. Nr. 6050



EXTENSIONS-TAPE-WHITE
60 Stück
Ersatz tapes für Tape-Extensions
EXTENSIONS-TAPE-WHITE
60 pieces
Spare tapes for Tape-Extensions
Art. Nr. 6050

MONTIER-ZANGE
Art. Nr. 6008



MONTIER-ZANGE
für Tape-Extensions
ASSEMBLY PLIERS
for Tape-Extensions
Art. Nr. 6008

ENTFERNER-LÖSUNG
für Tape-Extensions
REMOVER-SOLVENT
for Tape-Extensions
Art. Nr. 6019

BELLE MADAME EXTENSIONS
FARBING / COLOUR-RING
15 Farben / 15 Colours
Art. Nr. 6199

BELLE MADAME EXTENSIONS
BÜRSTE / BRUSH
Art. Nr. 6015

TAPE-EXTENSIONS
ANWENDUNG
APPLICATION



FARBKARTE EXTENSIONS COLOUR CHART EXTENSIONS

BROWN COLOURS



Espresso
(2)



Dark-Mocca
(4)



Light-Brown
(8)



Medium-Ash-Blond
(10/12)

BLOND COLOURS



Chocolate/Cream-Root
(10/27/20R+Root8)



Medium-Blond
(12A)



Honey-Mix
(12A/25R/28)



Ash-Blond (15)



Blond-Mix
(20/25R)



Champagne-Root
(20R/23+Root10)



Swedish-Blond-Root
(23A/26+Root16)



Swedish-Mix
(23A/26)

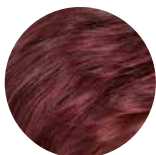


Platinum-Blond
(26+Platinum)

RED COLOURS



Dark-Auburn-Mix
(33/30)



Bordeaux-Red
(133)



KERATIN-BOND RH 50 CM

Extension Strähne
mit Keratin-Bonding,
50cm Haarlänge
1g / Stück
25 Stk. / Packung
= 25g je Packung

Farben ↻ Farbkarte links

Extension strand
with Keratin-bonding,
50cm hair length
1g / piece
25 pcs. / pack
= 25g per pack

Colours ↻ Colour Chart on the left
Art. 6115



TAPE-IN RH 40 CM 50 CM

Extension-Strähne
mit Klebestreifen,
40cm oder 50cm Haarlänge
2,5g / Stück
10 Stk. / Packung
= 25g je Packung

Farben ↻ Farbkarte links

Extension strand
with adhesive tape,
40cm or 50cm hair length
2.5g / piece
10 pcs. / pack
= 25g per pack

Colours ↻ Colour Chart on the left

Art. 6124 (40cm)
Art. 6125 (50cm)



ECHTHAAR QUALITÄT

Human Hair Quality

ECHTHAAR-QUALITÄTEN

INDO-HAAR

Standardqualität von Echthaar aus indischem Haar. Ansätze und Spitzen sind vermischt. Die Schuppenschicht ist vollständig entfernt. Das Haar ist schonend gebleicht und gefärbt. Standardprodukte aus dieser Qualität sind z. B. MONACO und MT-120.

ELEGANT-REMY-HAAR

Hochwertige Qualität von Echthaar aus indischem Haar. Elegant-Remy-Haar ist eine Mischung aus Indo-Haar und Premium-Remy-Haar-1, um eine bessere Qualität im Vergleich zu Indo-Haar zu erreichen. Elegant-Remy-Haar hat ein sehr gutes Preis/Leistungsverhältnis. Standardprodukte aus dieser Qualität sind z. B. POLY-LINE-100 und PARIS.

INDIAN-CHINESE-MIX-HAAR

Mischung von Echthaar aus Indo-Haar und China-Haar. Ergibt eine robuste Haarqualität, die nicht verfilzt. Gut geeignet für permanente Befestigung und für helle Blondtöne. Standardprodukte aus dieser Qualität sind z. B. NYLON-LINE-150, MT-5000 und MICRO-SKIN.

INFO: REMY-HAAR

Die Ansätze und Spitzen sind nicht vermischt. Das Haar ist schonend gebleicht und gefärbt. Die Schuppenschicht ist je nach Qualität und Farbe teilweise bzw. weitgehend erhalten.

PREMIUM-REMY-HAAR-1

100% INDO-REMY-HAAR

Echthaar aus 100% indischem Remy-Haar. Bei dem Premium-Remy-Haar-1 ist die Schuppenschicht zu ca. 50% erhalten. Die Haarqualität ist als Maßanfertigung erhältlich.

PREMIUM-REMY-HAAR-2

INDO-REMY-HAAR / „RH“ QUALITÄT

Echthaar primär aus indischem Remy-Haar. Beimischung von chinesischem Remy-Haar bei blonden/hellen Haar, um Qualität und Haltbarkeit zu erhöhen. Weiche und feine Haarqualität, welche nach der Wäsche eine Naturwelle hat. Standardprodukte aus dieser Qualität sind alle „RH“ Modelle wie z. B. GRANADA RH, ARABELLA RH oder ANASTASIA LONG RH.

PREMIUM-REMY-HAAR-3

INDO-CHINESE-REMY-HAAR / „RMH“ QUALITÄT

Echthaar aus indischem und chinesischem Remy-Mix-Haar. Verhältnis ca. 50%/50%. Dunkle Haare enthalten weniger und helle Haare enthalten mehr chinesisches Remy-Haar. Robuste Haarqualität, welche nach der Wäsche glatter bleibt und eine gute Haltbarkeit hat. Standardprodukte aus dieser Qualität sind DERMA-SOFT-200-RMH und TOSCA-RMH.

PREMIUM-REMY-HAAR-4

100% CHINESE-REMY-HAAR / „CRH“ QUALITÄT

Echthaar aus 100% chinesischem Remy-Haar. Solide und höchste Qualitätsstufe für asiatische Echthaare. Bleibt nach der Wäsche weitgehend glatt und ist auf lange Haltbarkeit ausgelegt. Standardprodukt aus dieser Qualität ist DONNA FT CRH.

EURO-REMY-HAAR

PRÄPARIERTES EUROPÄISCHES HAAR

Erstklassig präpariertes Europäisches Haar. Höchste Qualitätsstufe für Echthaar. Ansätze und Spitzen sind nicht vermischt. Die natürliche Schuppenschicht ist weitestgehend erhalten. Zum Knüpfen werden ca. 5 cm der Ansätze chloriert (dies entfernt Schuppen), um ein Verfilzen durch Knüpfbärte zu verhindern. Standardprodukte aus dieser Qualität sind z. B. ASCONA oder FERRARA-33.

EURO-ROH-SCHNITTHAAR

UNBEHANDELTES EUROPÄISCHES HAAR

Nicht präpariertes Europäisches Echthaar – auch „Virgin-Hair“ genannt. Nur in wenigen natürlichen Farben erhältlich. Ansätze und Spitzen sind nicht vermischt. Die natürliche Schuppenschicht ist vollständig erhalten. Zum Knüpfen werden ca. 5 cm der Ansätze chloriert (dies entfernt Schuppen), um ein Verfilzen durch Knüpfbärte zu verhindern. Standardprodukte aus dieser Qualität sind z. B. die RAPUNZEL Perücken.

HUMAN HAIR QUALITIES

INDO-HAIR

Standard quality of human hair from Indian hair. Roots and tips are mixed. The cuticle layer is completely removed. The hair is gently bleached and dyed. Standard products of this quality are e.g. MONACO and MT-120.

ELEGANT-REMY-HAIR

High quality of human hair from Indian hair. Elegant-Remy-Hair is a blend of Indo-Hair and Premium-Remy-Hair-1 to achieve better quality compared to Indo-Hair. Elegant-Remy-Hair has a very good price/quality ratio. Standard products of this quality are e.g. POLY-LINE-100 and PARIS.

INDIAN-CHINESE-MIX-HAIR

Blend of human hair from Indo-Hair and Chinese-Hair. Provides a robust hair quality that does not tangle. Well suited for permanent attachment and for light blonde tones. Standard products of this quality are e.g. NYLON-LINE-150, MT-5000 and MICRO-SKIN.

INFO: REMY-HAIR

The roots and tips are not mixed. The hair is gently bleached and coloured. The cuticle layer is partially or largely preserved depending on the quality and colour.

PREMIUM-REMY-HAIR-1

100% INDO-REMY-HAIR

Human hair from 100% Indian-Remy-Hair. With Premium-Remy-Hair-1, the cuticle layer is approximately 50% preserved. The hair quality is available as for custom-made orders.

PREMIUM-REMY-HAIR-2

INDO-REMY-HAIR / „RH“ QUALITY

Human hair primarily from Indian-Remy-Hair. Addition of Chinese-Remy-Hair to blonde/light hair to increase quality and durability. Soft and fine hair quality that has a natural wave after washing. Standard products of this quality are e.g. all „RH“ models such as GRANADA RH, ARABELLA RH or ANASTASIA LONG RH.

PREMIUM-REMY-HAIR-3

INDO-CHINESE-REMY-HAIR / „RMH“ QUALITY

Human hair made from Indian-Chinese-Remy-Mix-Hair. Ratio approx. 50%/50%. Dark hair contains less and light hair contains more Chinese Remy hair. Robust hair quality that stays straighter after washing and has a good durability. Standard products of this quality are e.g. DERMA-SOFT-200-RMH and TOSCA-RMH.

PREMIUM-REMY-HAIR-4

100% CHINESE REMY HAIR / „CRH“ QUALITY

Human hair made from 100% Chinese-Remy-Hair. Solid and highest quality level for Asian human hair. Remains largely straight after washing and is designed for long durability. The standard product of this quality is DONNA FT CRH.

EURO-REMY HAIR

PROCESSED EUROPEAN-HAIR

First-class processed European hair. Highest quality level for human hair. Roots and tips are not mixed. The natural cuticle layer is largely preserved. Before knotting, approx. 5 cm of the roots are bleached (this removes cuticles) to prevent tangling caused by knotted beards. Standard products of this quality are e.g. ASCONA or FERRARA-33.

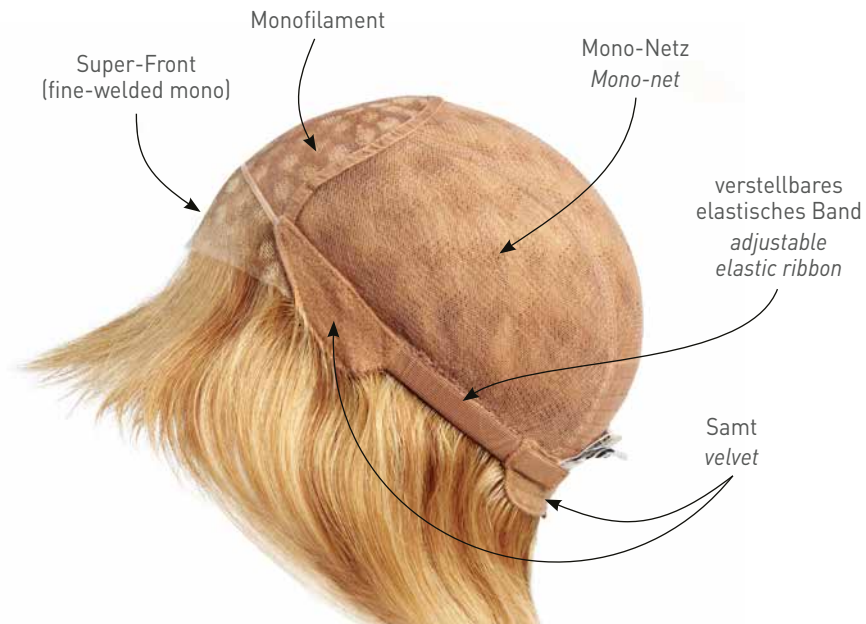
EURO-RAW-CUT HAIR

UNTREATED EUROPEAN HAIR

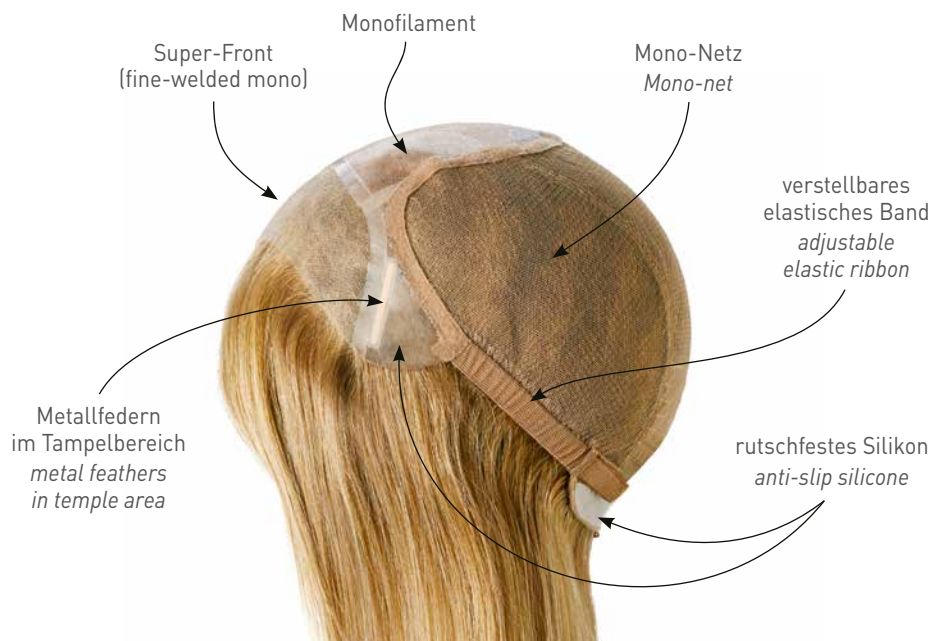
Untreated European-Hair – also called „Virgin-Hair“. Only available in a few natural colours. Roots and tips are not mixed. The natural cuticle layer is completely preserved. Before knotting, approx. 5 cm of the roots are bleached (this removes cuticles) to prevent tangling caused by knotted beards. Standard products of this quality are e.g. the RAPUNZEL wigs.

Echthaar PERÜCKENMONTUREN WIG CAPS Human Hair

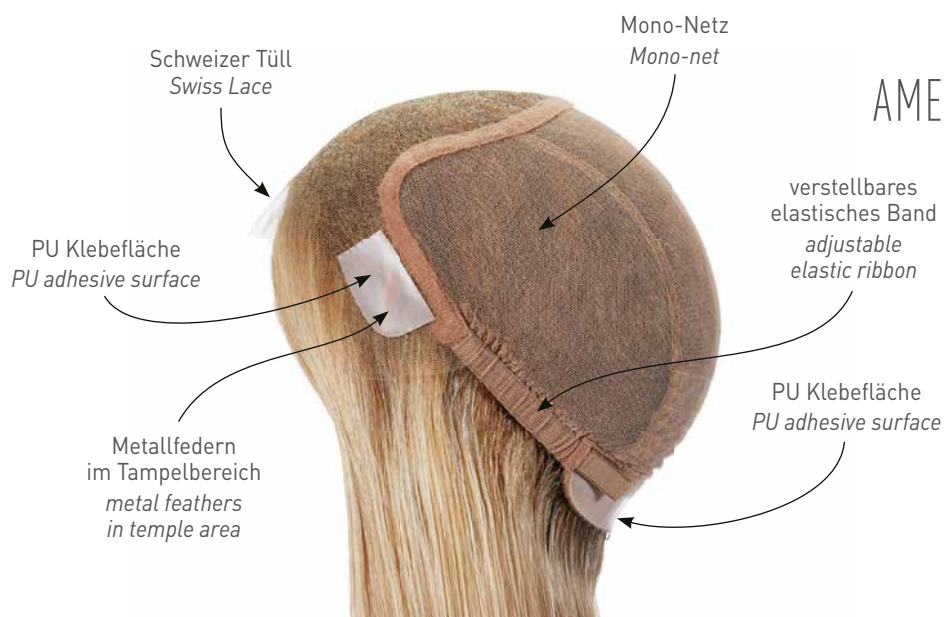
ANASTASIA



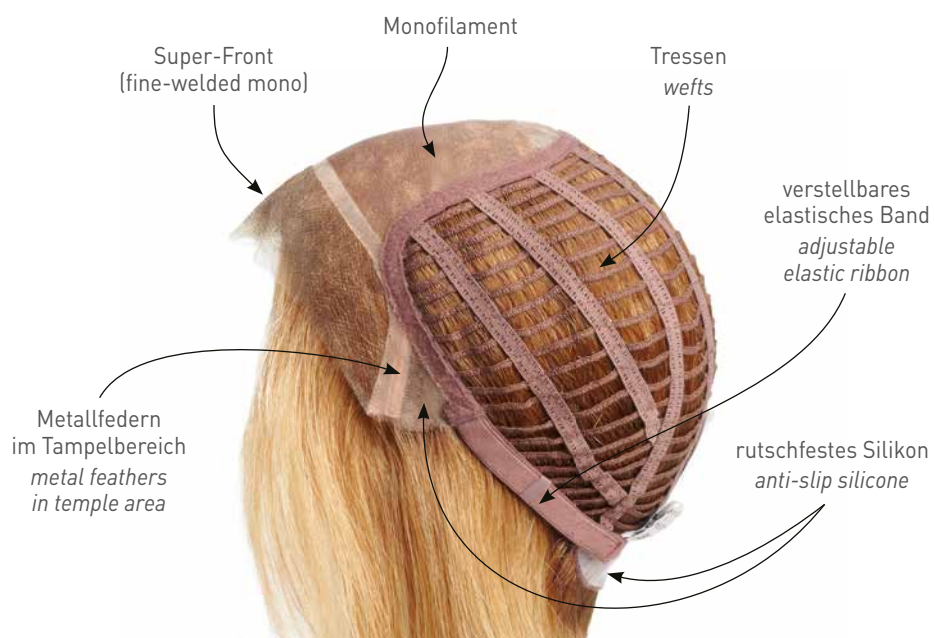
ANASTASIA 2



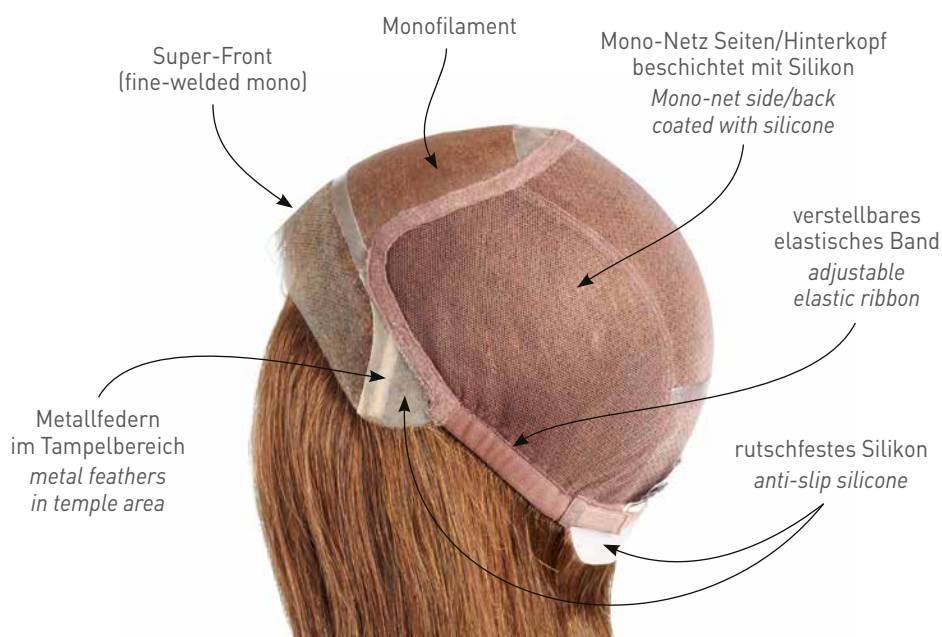
AMELIA SWISS LACE



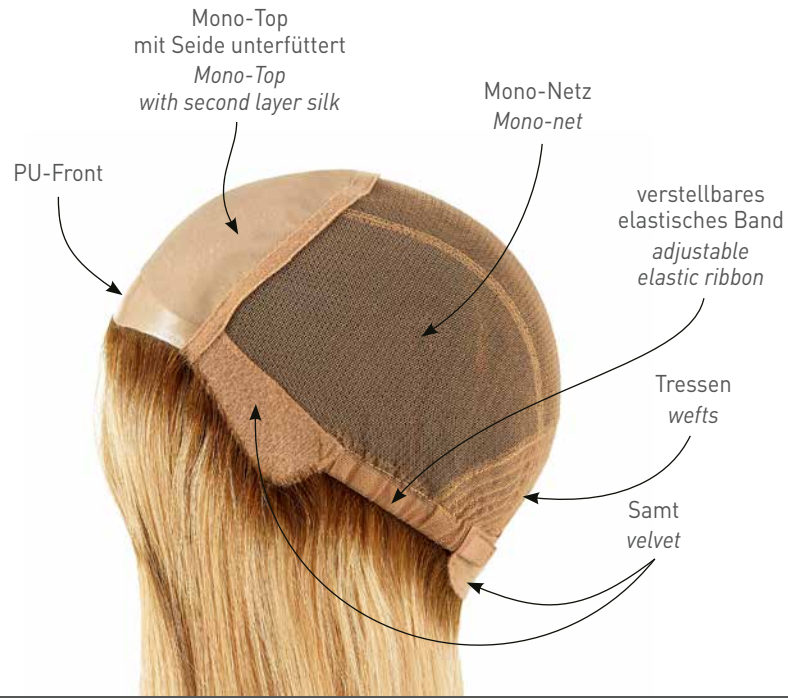
GISELLE



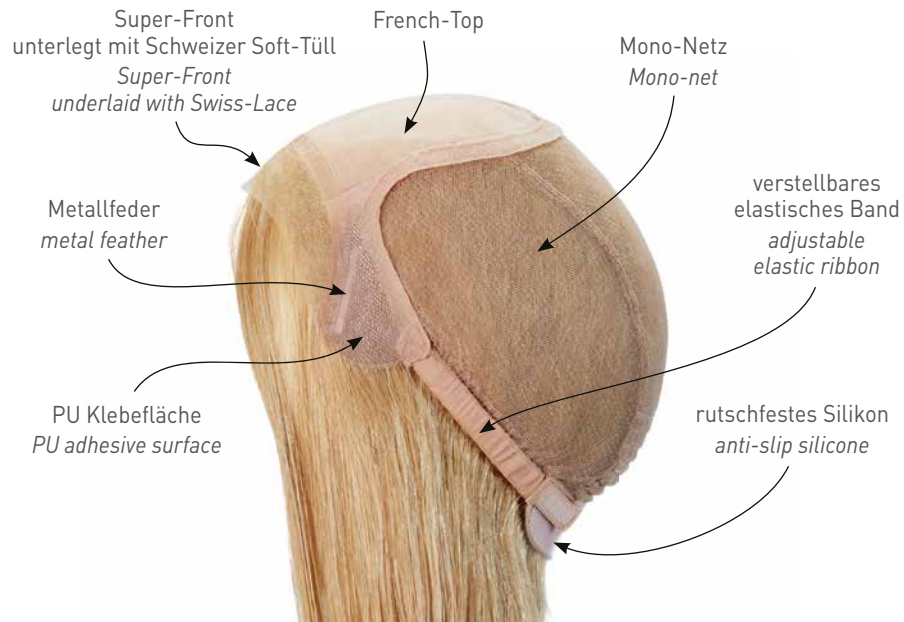
TRAVIATA S



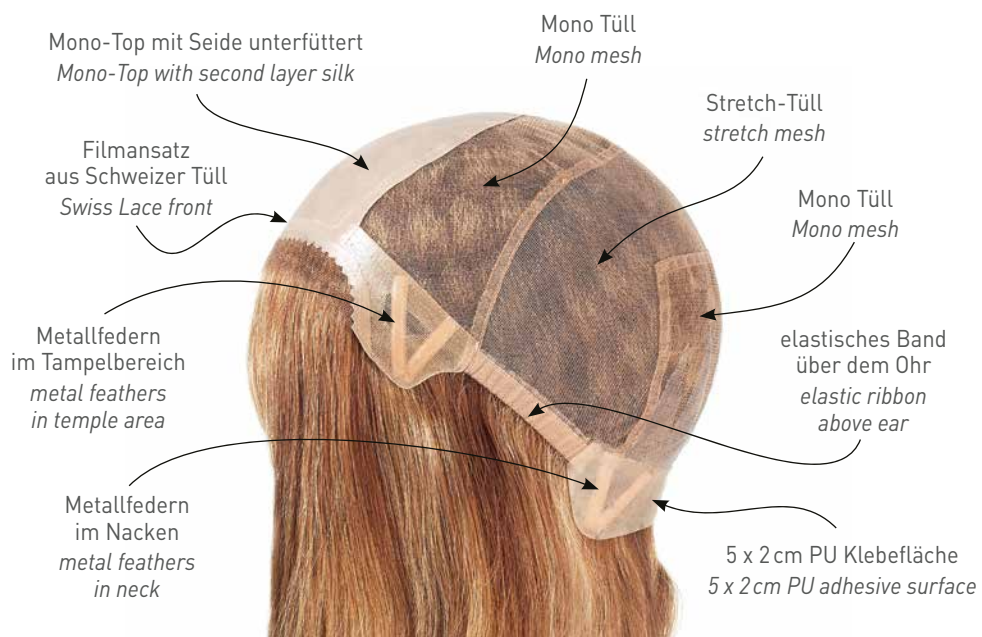
REBECCA



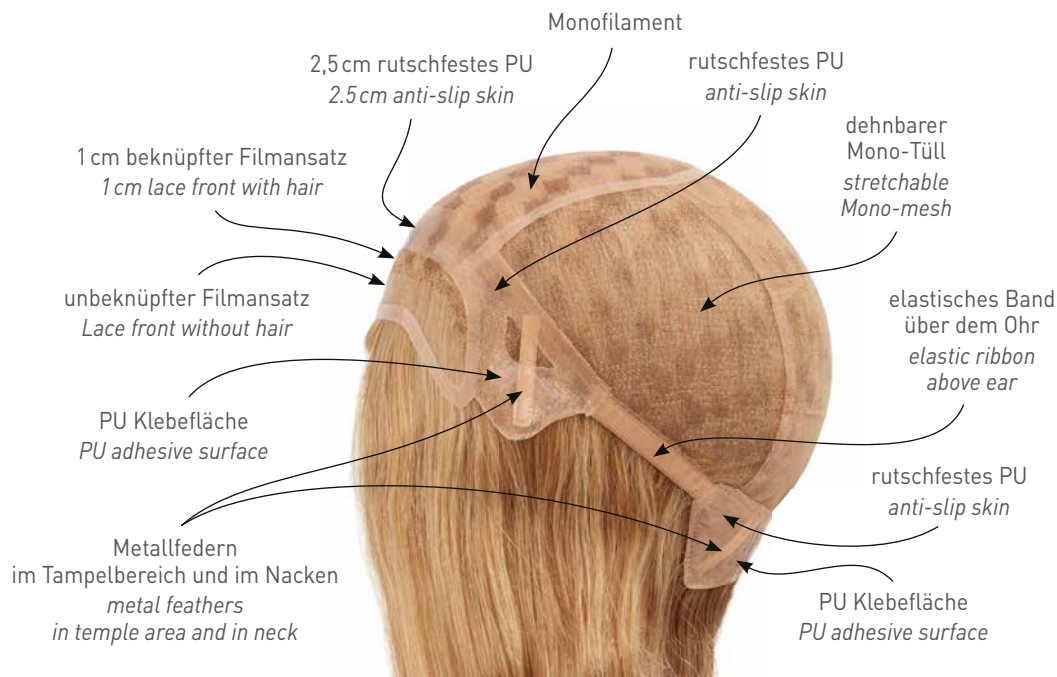
DONNA FT



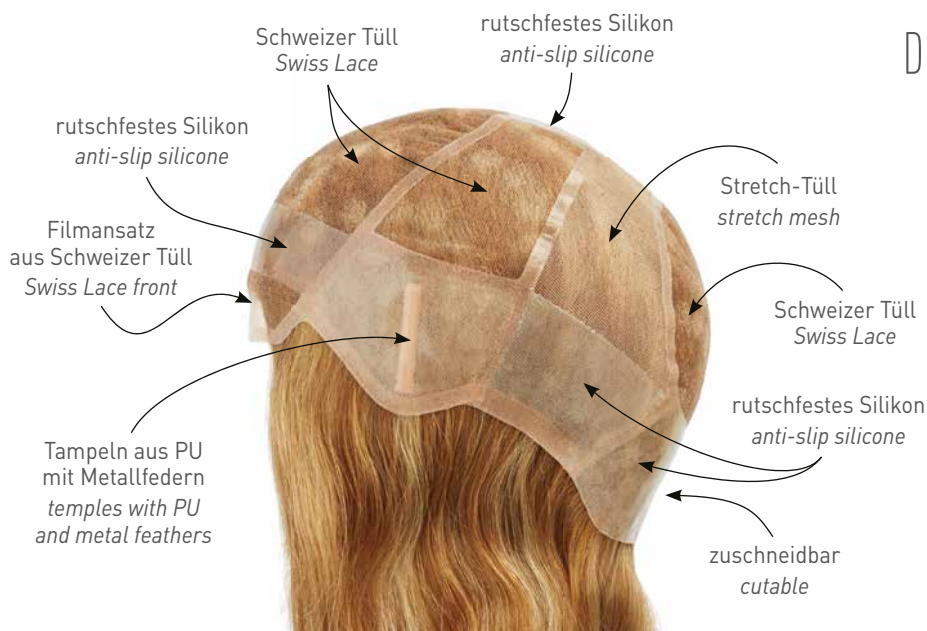
FERRARA



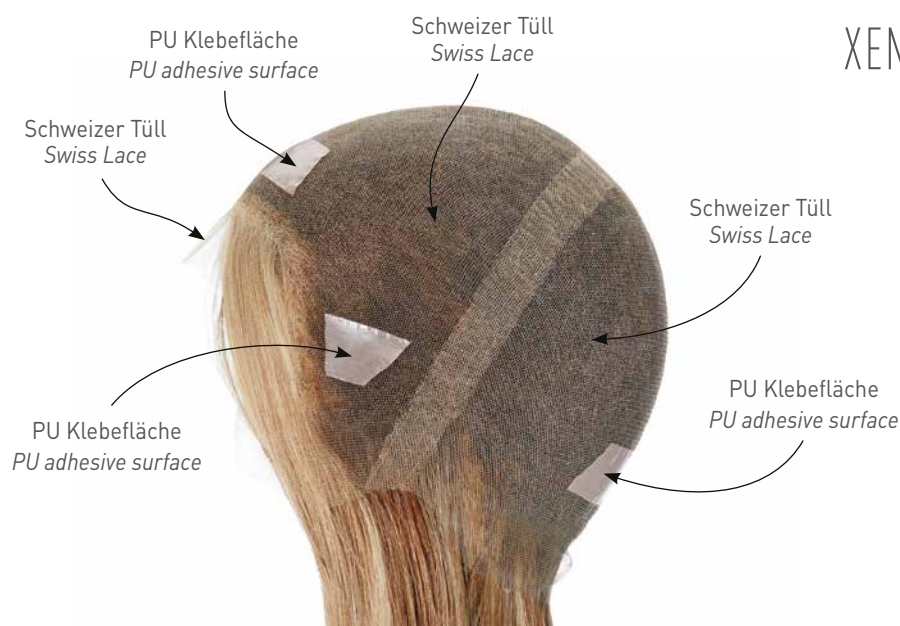
TOSCA



DERMA-SOFT-200



XENIA SWISS LACE



natural HAIR CARE



EXTREM WIRKSAM
MIT SHEABUTTER UND JOJOBA-ÖL

EXTREMELY EFFECTIVE
WITH SHEA BUTTER AND JOJOBA OIL

INTENSIVE PFLEGE FÜR COLORIERTES ECHTHAAR

Durch die regelmäßige Behandlung mit BELLE MADAME Pflegeprodukten verliert die Zweitfrisur nicht ihre Form und behält für lange Zeit ihren seidigen Glanz und natürlichen Halt.

Die Pflegeprodukte der VITAL-Serie bestechen durch eine außergewöhnlich intensive Pflegeformel, in der Sheabutter mit Jojoba-Öl hochwirksam miteinander kombiniert sind. Sie stärken beanspruchtes Haar nachhaltig und geben ihm natürliche Geschmeidigkeit und seidigen Glanz.

INTENSIVE CARE FOR COLOUR TREATED HUMAN HAIR

When using BELLE MADAME care products regularly, the wig will last longer and keep its silky shine and natural hold.

The VITAL care products stand out with their exceptionally intensive care formula, which is based on a highly effective combination of shea butter and jojoba oil. They strengthen damaged hair sustainably and give naturally silky softness and shine.

SOIN INTENSIF POUR CHEVEUX NATURELS COLORES

Par l'usage régulier de BELLE MADAME produits d'entretien la perruque ne perdra pas sa forme et tiendra sa brillance et sa silhouette naturelle pour longtemps.

Les produits de soin VITAL care se démarquent avec leur formule de soin exceptionnellement intensive, qui est basée sur une combinaison hautement efficace de beurre de Karité et d'huile de Jojoba. Ils renforcent durablement les cheveux abîmés et les rendent naturellement doux soyeux et brillants.

CUIDADOS INTENSIVOS PARA CABELLOS NATURALES TINTURADOS

Usar regularmente los productos BELLE MADAME harán que su peluca de cabello natural mantenga por largo tiempo su forma, su brillo sedoso y aspecto natural.

Los productos de cuidado de la serie VITAL disponen de una fórmula de cuidado intensivo, la manera de caridad y aceite de jojoba, los cuales combinan excepcionalmente entre sí. Fortalecen el cabello dañado dando una suavidad natural duradera y brillo sedoso.

TRATTAMENTO INTENSIVO PER CAPELLI NATURALI COLORATI

Grazie al trattamento regolare con BELLE MADAME prodotti di cura speciali, la parrucca non perde la sua forma e mantiene per lungo tempo il suo setoso splendore e la sua naturale tenuta.

I prodotti per la cura della serie VITAL dispongono di una formula di cura particolarmente intensiva che combina l'efficacia del burro di karité con olio di jojoba. Questi rafforzano i capelli danneggiati e conferiscono una sostenuta naturale morbidezza e una lucentezza setosa.



BELLE MADAME
VITAL SHAMPOO
SHAMPOOING

Art. 6060

Pflegendes Shampoo. Spendet Feuchtigkeit und sorgt für leichte Kämmbarkeit. Verleiht dem Haar Geschmeidigkeit und Glanz.

Nourishing shampoo. Moisturizes and makes hair easy to comb. Gives hair softness and shine.

Shampooing soignant. Hydrate et facilite le démêlage. Rend les cheveux souples et éclatants.

Champú nutritivo. Hidrata proporciona un fácil peinado. Deja el cabello suave y brillante.

Shampoo trattante. Idrata e garantisce una facile trattabilità, donando ai capelli morbidezza e splendore.



BELLE MADAME
VITAL BALSAM
BALM · BAUME

Art. 6061

Pflegender und reparierender Balsam. Glättet die Haarstruktur und gibt dem Haar natürliche Feuchtigkeit.

Nourishing and repairing balm. Soothes the hair structure and gives the hair natural moisture.

Baume soignant et régénérant. Lisse la structure capillaire et hydrate naturellement les cheveux.

Bálsamo nutritivo y reparador. Suaviza la estructura del cabello y le da la humedad natural del cabello.

Balsamo trattante rigenerante. Liscia la struttura del capello, trattandola in maniera naturale.



BELLE MADAME
LEAVE-IN
CONDITIONER

Art. 6062

Intensiv pflegender Leave-In Conditioner. Sorgt für geschmeidiges und glattes Haar, schützt vor Austrocknung und verbessert die Kämmbarkeit.

Intensive nourishing leave-in conditioner. Ensures smooth and straight hair, protects against drying out and makes hair easy to comb.

Leave-in conditioner pour soins intensifs. Assouplit et lisse les cheveux, les protège contre le dessèchement et facilite le démêlage.

Acondicionador intensivo sin enjuague. Mantiene el cabello sedoso y liso, lo protege contra la sequedad y facilita el peinado.

Leave-in conditioner ad azione trattante intensiva. Rende i capelli setosi e lisci, li protegge dalla disidratazione e ne migliora la pettinabilità.



BELLE MADAME
SOFT
SPRAY

Art. 5073

Der Silikon-Pflegekomplex versiegelt das Haar, glättet spröde Spitzen, verleiht dem Haar Geschmeidigkeit und Glanz und macht es leicht kämmbar.

The silicone conditioning complex seals the hair, smoothes brittle ends, gives the hair softness and shine and makes it easy to comb.

Le complexe de silicone lustre les cheveux, lisse les pointes cassantes, confère aux cheveux souplesse et brillance et les rend facile à démêler.

La silicona sella el cabello, suaviza las puntas quebradizas dándole brillo facilitando el peinado.

Il complesso di silicone crea uno scudo sui capelli, liscia le punte sfibrate e conferisce ai capelli morbidezza e splendore, rendendoli facilmente districabili.



BELLE MADAME
PFLEGESET
CARE SET

Art. 6066

VITAL SHAMPOO +
VITAL BALSAM
VITAL BALM +
LEAVE-IN
CONDITIONER +
HOLZBÜRSTE
WOODEN BRUSH



BELLE MADAME
VITAL
MASK

Art. 6063

Regenerierende Pflegemaske mit Tiefenwirkung. Revitalisiert die Haarstruktur und sorgt für geschmeidiges, seidig glänzendes Haar.

Regenerating mask with depth effect. Revitalizes the hair structure and makes hair glossy and smooth.

Masque de soins régénérant avec effet en profondeur. Révitalise la structure capillaire et apporte une chevelure souple et brillante comme de la soie.

Máscara intensiva regeneradora. Revitaliza la estructura del cabello y proporciona un cabello suave, sedoso y brillante.

Maschera trattante e rigenerante ad azione profonda. Rivalizza la struttura dei capelli e li rende morbidi e setosi.



BELLE MADAME
HAIR SHINE
+ UV-PROTECTION

Art. 5063

Glanz- und Frisierspray mit Provitamin B5 und UV-Schutz. Spendet Feuchtigkeit, ohne das Haar zu belasten.

Shine and styling spray with provitamin B5 and UV-protection. Gently moistening without overburdening the hair.

Spray pour une coiffure brillante avec provitamine B5 et protection UV. Hydrate les cheveux sans les alourdir.

Spray de brillo de peinado con provitamina B5 y protección UV. Proporciona humedad sin cargar el cabello.

Spray splendente e fissante con provitamina B5 e protezione UV. Idrata, senza appesantire il capello.



BELLE MADAME
HAIR SPRAY
HAARSPRAY

Art. 5062

Haarspray für perfekten Halt und natürlichen Glanz.

Hair spray for a perfect hold and natural shine.

Laque pour tenue parfaite et brillance naturelle.

Laca para una fijación perfecta y un brillo natural.

Lacca per capelli per tenuta perfetta e splendore naturale.



BELLE MADAME
ANTI STATIC
SPRAY

Art. 5064

ANTISTATIK SPRAY sorgt dafür, dass sich das Haar nicht statisch auflädt und verleiht Geschmeidigkeit.

ANTI STATIC SPRAY ensures that the hair does not become statically charged and gives smoothness.

SPRAY ANTISTATIQUE protège les cheveux de l'électricité statique et les rend souples.

SPRAY ANTIESTÁTICO garantiza que el cabello no se cargue estáticamente y aporta suavidad.

SPRAY ANTISTATICO assicura che i capelli non si caricano staticamente e fornisce morbidezza.

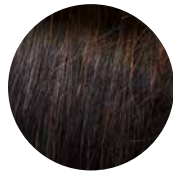
BROWN COLOURS



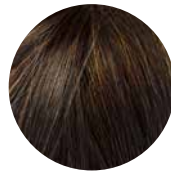
1-B



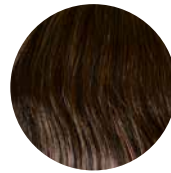
Espresso
(2)



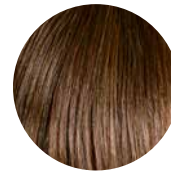
Espresso-Mix
(2/4)



Dark-Mocca
(4)



Dark-Mocca-Mix
(4/8)



Mocca-Mix
(6/10-6)
(8/10/6-6)



Light-Brown
(8)



Chocolate
(8/12/30)



Chocolate-Mix
(8/10/27/20)



Medium-Ash-Blond
(10/12)

FARBÜBERSICHT ECHTHAAR
COLOUR CHART HUMAN HAIR

BLOND COLOURS



Chocolate/Cream-Root
(10/27/20R+Root8)



Caramel-Root
(12/27/22H+Root10)



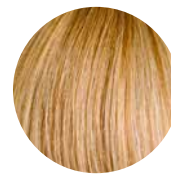
Honey-Toast
(12/15/25-12)



Honey-Mix-Root
(12A/25R/28+Root10/12)



Honey-Mix
(12A/25R/28)



Vanilla-Root
(14/26+Root14)



Danish-Blond
(19/20R)



Danish-Blond-Root
(20R/19+Root12)



Light-Blond-Mix
(15/20/23+Root11)



Vanilla-Mix-Root
(20/12A/23A+Root10/12A)



Champagne-Root
(20R/23+Root10)



Swedish-Blond-Mix
(25R/22H-20+Root16)



Swedish-Blond-Root
(23A/26+Root16)**



Swedish-Mix
(23A/26)

RED COLOURS



Brown-Red-Mix
(6/30)



Dark-Red-Mix
(30/6/27-6)



Terracotta-Gold
(30/8/27R-8)



Terracotta-Mix-Root
(30/27+Root4)



Light-Copper-Mix
(30/27)



Cherry-Root
(33/130+Root4)



Dark-Auburn-Mix
(33/30)



Ruby-Mix
(33/32B/135/29)

GREY COLOURS



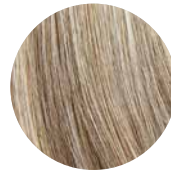
Brown-Grey
(38/39)*



Dark-Smoke-Grey
(39/43+F56)*



Smoke-Grey
(43/56-39)*



Light-Smoke-Grey
(56/53-39)*

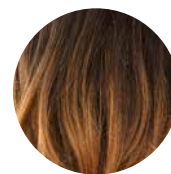


Blond-Grey-Root
(17/101+Root18)*

OMBRE COLOURS



Chocolate/Honey-Ombre
(8/10/27/20-12A/25R/28)



Dark-Brown/Copper-Ombre
(8-27R/29)



Chestnut/Blond-Ombre
(30/31-28)

Belle Madame®
Natural Hair Line

BEDEUTUNG DER FARBNUMMERN

/ Schrägstriche zwischen zwei Farbnummern: die Farben sind gemischt.

- Bindestrich zwischen zwei Farbnummern: von einer Farbe in die andere Farbe übergehend.

Leichte Farbabweichungen sind möglich, bitte zusätzlich BELLE MADAME FARBRING verwenden.

MEANING OF COLOUR NUMBERS

/ Diagonal mark between two colour numbers: colours are mixed.

- Hyphen between two colour numbers: gradual transition from one colour to the other.

Slight deviations of colour might occur. In addition please use BELLE MADAME COLOUR RING.

SIGNIFICATION DES CODES COULEURS

/ Barre oblique entre deux numéros de couleur: Les couleurs sont mélangées.

- Trait d'union entre deux numéros de couleur: passage d'une couleur à l'autre.

De légères variations de couleur sont possibles. Prière d'utiliser en addition le MÉCHIER BELLE MADAME.

SIGNIFICADO DE CODIGO DE COLORES

/ La diagonal entre dos números de colores: los colores están mezclados.

- El guión entre dos números de colores: transición gradual de un color a otro.

Son posibles ligeras variaciones cromáticas. Utilizar adicionalmente por favor, el ANILLO DE COLORES BELLE MADAME.

SIGNIFICATO DEI CODICI COLORI

/ Barre oblique tra due codici colori: i colori sono mescolati.

- Trattino tra due codici colori: da un colore all'altro.

Sono possibili lievi variazioni di colore. Utilizzare anche il CAMPIONARIO COLORI DI BELLE MADAME.

VERARBEITUNG QUALITY QUALITE ELABORACIÓN LAVORAZIONE

◀ SUPER-FRONT

Großer Filmansatz für stirnfreie Frisuren

Large lace-front for fringeless hairstyles

Grande bordure invisible devant pour des coiffures sans frange

Película grande para cortes de pelo que no se van a la frente

Grande lavorazione a innesto su pellicola per pettinatura senza frangia

◀◀ SUPER-FRONT PLUS

Super-Front von Tempel zu Tempel
Super-Front from temple-to-temple
Super-Front de temple à temple
Super-Front de sien a sien
Super-Front da tempia a tempia



Monofilament + handgeknüpft
Monofilament + hand-tied
Monofilament + implanté main
Monofilamento + anudadas a mano
Monofilamento + annodata a mano



Monofilament + Tresse
Monofilament + wefts
Monofilament + bandes
Monofilamento + trama
Monofilamento + fascette

PERÜCKEN ECHTHAAR WIGS HUMAN HAIR

ADRIANA RH	6
AMELIA SWISS LACE RH	26
ANASTASIA RH	10
ANASTASIA LONG RH	28
ANASTASIA LONG LARGE RH	31 + 39
ANASTASIA EXTRA LONG RH	34
ARABELLA RH	8
ARABELLA LARGE RH	9 + 39
DERMA-SOFT-200-RMH	45
DONNA FT CRH	24
ELEKTRA RH	36
EVITA RH	14
FERRARA	50
GILDA RH	40
GISELLE RH	23
GISELLE LARGE RH	22 + 39
LUCIA RH	20
MUSETTA RH	12
MUSETTA LARGE RH	13 + 38
MUSETTA EXTRA LARGE RH	13 + 38
RAPUNZEL	52
REBECCA RH	18
TOSCA-RMH	44
TRAVIATA RH	32
VALENTINA RH	16
XENIA SWISS LACE RH	43

HAARTEILE ECHTHAAR HAIR PIECES HUMAN HAIR

ALMERIA RH	58
ASCONA	70
BARCELONA RH	67
BARCELONA LARGE RH	66
BARCELONA LONG RH	67
BORDEAUX	71
CONSTANCE	71
FRONTALIS RH	72
GRANADA RH	69
GRANADA LONG RH	69
LYON FT RH	61
MALAGA RH	68
MILANO	70
MONACO	71
NIZZA RH	58
NIZZA LONG RH	59
NIZZA LARGE RH	58
NIZZA EXTRA LARGE RH	58
NYLON-LINE-75	64
NYLON-LINE-150	64
NYLON-LINE-250	65
NYLON-LINE-300	65
PARIS	57
PARIS LARGE	57
PISA	70
POLY-LINE-100	63
POLY-LINE-200	63
SOFT-LINE 3.5	63
VALENCIA RH	67
V-PART RH	61

VERLÄNGERUNGEN ECHTHAAR EXTENSIONS HUMAN HAIR

CLIP-IN-HAIR	75
KERATIN-BOND RH	77
TAPE-IN RH	77
VOLUME-WEFT RH	75

BelleMadame®

Natural Hair Line

by DENING HAIR

